



**Hammond Avenue  
Wolverhampton  
West Midlands  
WV10 9HX**

**Offers In Excess Of £216,000**

**bettermove**

# Hammond Avenue Wolverhampton

Bettermove are proud to present this 3 bedroom semi-detached house in Wolverhampton welcoming cash buyers only.

The property benefits from double glazing, gas central heating throughout and has off street parking available.

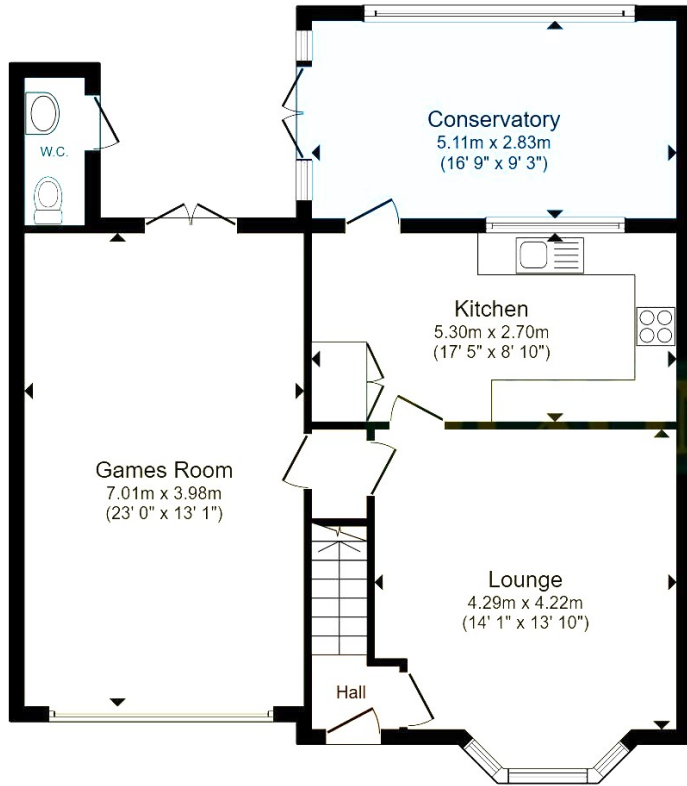
The council tax band is A.

The interior of this beautifully presented property comprises a spacious living room, games room, w/c, conservatory and fitted kitchen on the ground floor. The first floor consists of 3 bedrooms and the family bathroom. The exterior boasts a private rear garden, perfect for enjoying the summer months.

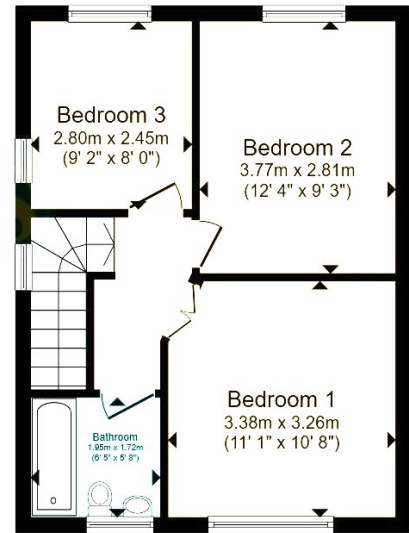
Located in the popular city of Wolverhampton, the property is close to a range of amenities, including shops, supermarkets, restaurants and pubs. Excellent transport connections can be found from the A460, A449 and many local bus routes.

This exciting opportunity should not be missed! All enquiries can be made through Bettermove on 0330 004 0050.





**Ground Floor**



**First Floor**

Total floor area 120.5 sq.m. (1,297 sq.ft.) approx

This floor plan is for illustrative purposes only. It is not drawn to scale. Any measurements, floor areas (including any total floor area), openings and orientation are approximate. No details are guaranteed, they cannot be relied upon for any purpose and they do not form part of any agreement. No liability is taken for any error, omission or misstatement. A party must rely upon its own inspection(s). Powered by [www.focalagent.com](http://www.focalagent.com)

Energy Efficiency Rating		
	Current	Potential
<i>Very energy efficient - lower running costs</i>		
(92+) <b>A</b>		
(81-91) <b>B</b>		<b>84</b>
(69-80) <b>C</b>	<b>70</b>	
(55-68) <b>D</b>		
(39-54) <b>E</b>		
(21-38) <b>F</b>		
(1-20) <b>G</b>		
<i>Not energy efficient - higher running costs</i>		
<b>England, Scotland &amp; Wales</b>	EU Directive 2002/91/EC	



20-22 Bridge End, Leeds, LS1 4DJ  
t: 0330 004 0050 e: hello@bettermove.co.uk  
[www.bettermove.co.uk](http://www.bettermove.co.uk)