



**Dartmouth Road
London
SE26 4QY**

Offers In Excess Of £265,000

bettermove

Dartmouth Road London

Bettermove are proud to present this 2 bedroom flat in London available with no forward chain.

The property benefits from double glazing, gas central heating throughout.

The council tax band is B.

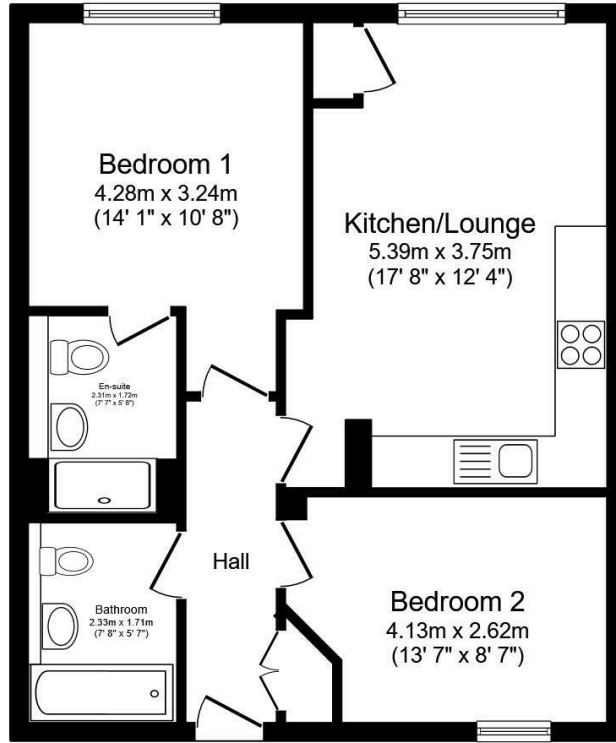
This is a leasehold property with 125 years on the lease from 25.03.2007; the ground rent is approximately £350pa and the service charge is approximately £3,975.76pa.

The interior of this beautifully presented property comprises a spacious living room, fitted kitchen, 2 bedrooms, an en-suite and the main bathroom.

Located in the popular residential area of Sydenham, the property is close to a range of amenities, including shops, supermarkets, restaurants and pubs. Excellent transport connections can be found from the A2216, Forest Hill overground station and many local bus routes.

This exciting opportunity should not be missed! All enquiries can be made through Bettermove on 0330 004 0050.





Total floor area 54.3 m² (584 sq.ft.) approx

This floor plan is for illustrative purposes only. It is not drawn to scale. Any measurements, floor areas (including any total floor area), openings and orientation are approximate. No details are guaranteed, they cannot be relied upon for any purpose and they do not form part of any agreement. No liability is taken for any error, omission or misstatement. A party must rely upon its own inspection(s). Powered by www.focalagent.com



20-22 Bridge End, Leeds, LS1 4DJ
t: 0330 004 0050 e: hello@bettermove.co.uk
www.bettermove.co.uk