



**Wethered Road
Marlow
Buckinghamshire
SL7 3TZ**

Offers In Excess Of £179,000

bettermove

Wethered Road Marlow

Bettermove are proud to present this 2 bedroom retirement flat in Marlow available with no forward chain.

Welcoming cash buyers only.

The property benefits from double glazing, electric heating throughout and has off street parking available.

The council tax band is D.

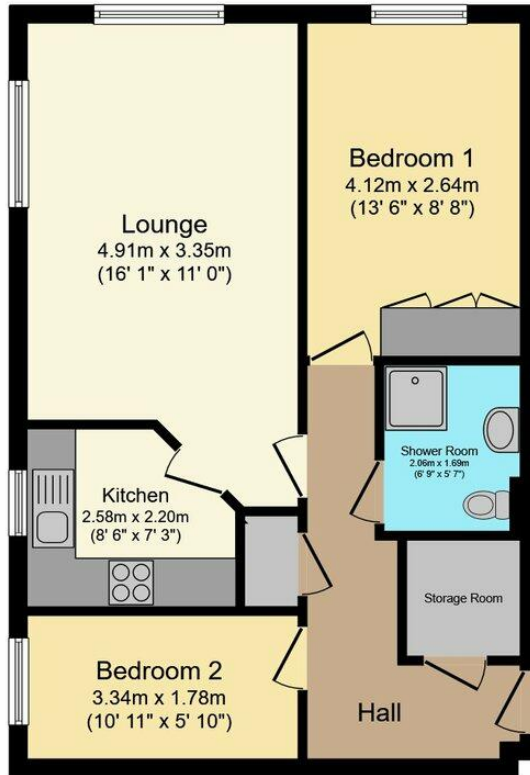
This is a leasehold property with 159 years on the lease from 1987; the ground rent is £93.35 paid twice yearly and the service charge is £2,026.84 paid twice yearly.

The interior of this beautifully presented property comprises a spacious living room, fitted kitchen, 2 bedrooms and the bathroom. The exterior boasts communal gardens, perfect for enjoying the summer months.

Located in the popular town of Marlow, the property is close to a range of amenities, including shops, supermarkets, restaurants and pubs. Excellent transport connections can be found from the A404, A4155 and Marlow train station.

This exciting opportunity should not be missed! All enquiries can be made through Bettermove on 0330 004 0050.





Total floor area 55.3 m² (595 sq.ft.) approx

This floor plan is for illustrative purposes only. It is not drawn to scale. Any measurements, floor areas (including any total floor area), openings and orientation are approximate. No details are guaranteed, they cannot be relied upon for any purpose and they do not form part of any agreement. No liability is taken for any error, omission or misstatement. A party must rely upon its own inspection(s). Powered by www.focalagent.com

Energy Efficiency Rating		
	Current	Potential
<i>Very energy efficient - lower running costs</i>		
(92+) A		
(81-91) B		
(69-80) C	74	80
(55-68) D		
(39-54) E		
(21-38) F		
(1-20) G		
<i>Not energy efficient - higher running costs</i>		
England, Scotland & Wales	EU Directive 2002/91/EC	



20-22 Bridge End, Leeds, LS1 4DJ
t: 0330 004 0050 e: hello@bettermove.co.uk
www.bettermove.co.uk