



**Kinderlee Way
Chisworth
Glossop
Derbyshire
SK13 5DB**

Offers In Excess Of £180,000

bettermove

Kinderlee Way

Glossop

Bettermove are proud to present this 2 bedroom flat in Chisworth, available with no forward chain.

The property benefits from double glazing, gas central heating throughout and has off street parking available via the allocated parking.

The council tax band is A.

This is a leasehold property with 150 years on the lease from 2015; the ground rent is £125pa and the service charge is £509 per quarter.

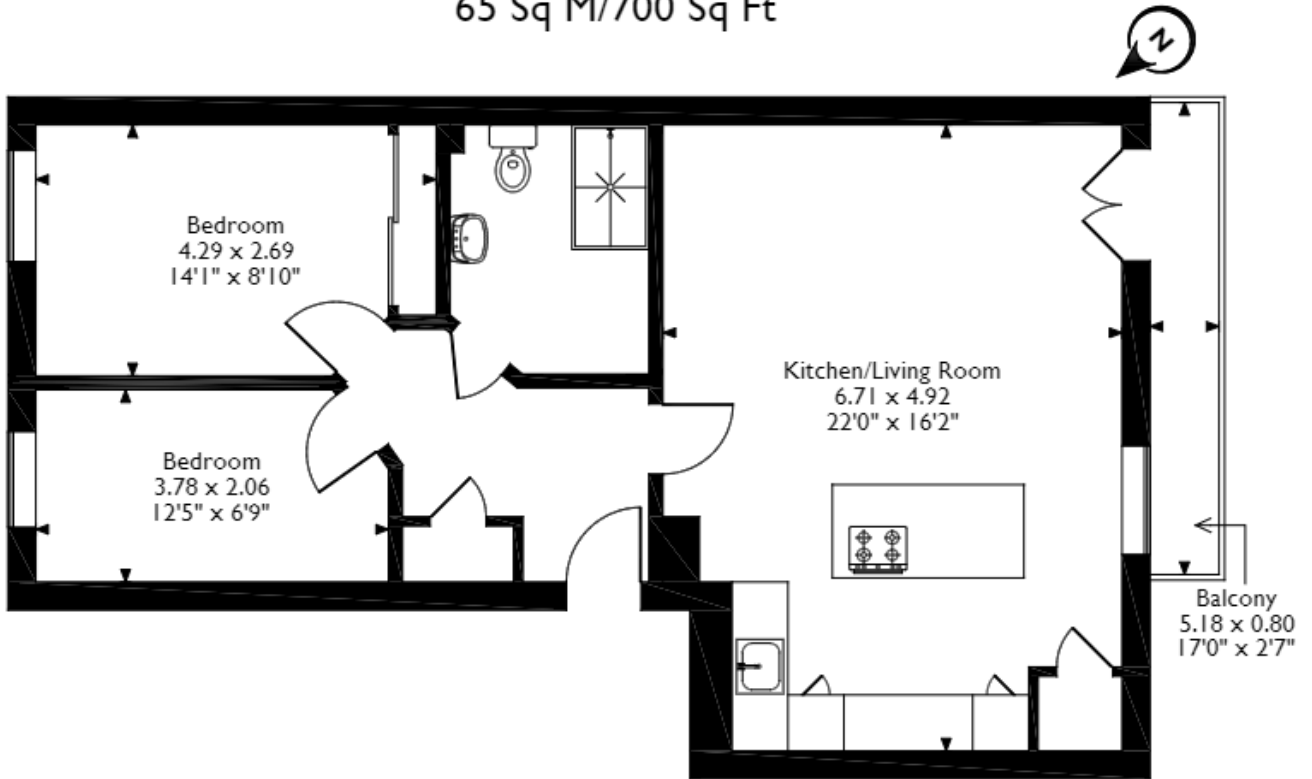
The interior of this beautifully presented property comprises a spacious open plan kitchen living area, 2 bedrooms and the shower room.

Located in the popular residential hamlet of Chisworth, the property is close to a range of amenities, including shops, supermarkets, restaurants and pubs. Excellent transport connections can be found from the A626, Broadbottom train station and local bus routes.

This exciting opportunity should not be missed! All enquiries can be made through Bettermove on 0330 004 0050.



Kinderlee Mill North, KinderleeWay Chisworth, Glossop, Derbyshire
 Approximate Gross Internal Area
 65 Sq M/700 Sq Ft



First Floor

Please note that the location of doors, windows and other items are approximate and this floorplan is to be used for illustrative purposes only. Unauthorized reproduction is prohibited.

Energy Efficiency Rating		
	Current	Potential
<i>Very energy efficient - lower running costs</i>		
(92+) A		
(81-91) B	81	81
(69-80) C		
(55-68) D		
(39-54) E		
(21-38) F		
(1-20) G		
<i>Not energy efficient - higher running costs</i>		
England, Scotland & Wales	EU Directive 2002/91/EC	



20-22 Bridge End, Leeds, LS1 4DJ
t: 0330 004 0050 e: hello@bettermove.co.uk
www.bettermove.co.uk