



Aberford Road
Oulton
Leeds
West Yorkshire
LS26 8HP

Offers In Excess Of £152,000

bettermove 

Aberford Road Leeds

Bettermove are proud to present this 3 bedroom terraced house in Leeds welcoming cash buyers only.

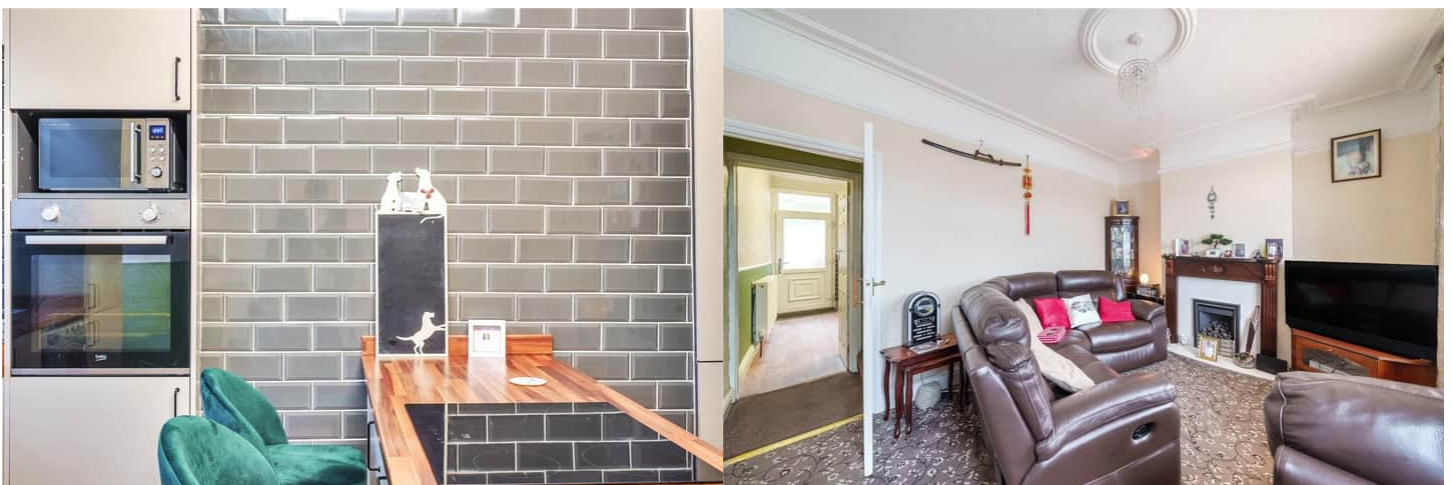
The property benefits from double glazing, gas central heating throughout and has off street parking available.

The council tax band is A.

The interior of this beautifully presented property comprises a spacious living room and fitted kitchen on the ground floor. The first floor consists of 2 bedrooms and the family bathroom. The second floor holds the 3rd bedroom. The exterior boasts a private rear yard, perfect for enjoying the summer months.

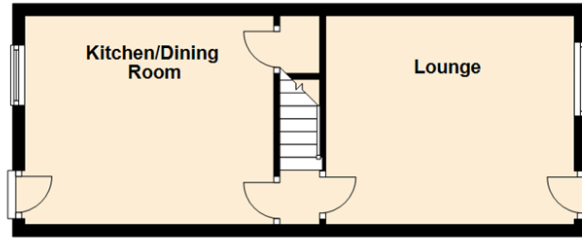
Located in the popular village of Oulton, the property is close to a range of amenities, including shops, supermarkets, restaurants and pubs. Excellent transport connections can be found from the A642, Woodlesford train station and local bus routes.

This exciting opportunity should not be missed! All enquiries can be made through Bettermove on 0330 004 0050.



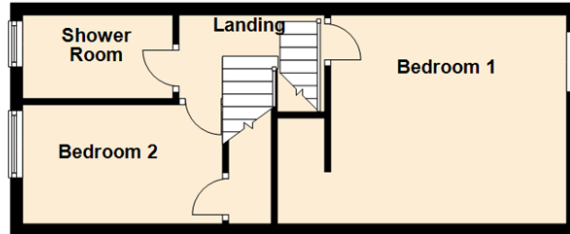
Ground Floor

Approx. 31.8 sq. metres (342.8 sq. feet)



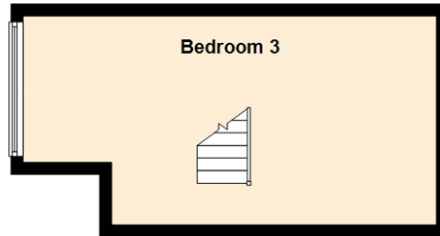
First Floor

Approx. 31.5 sq. metres (339.3 sq. feet)



Second Floor

Approx. 22.4 sq. metres (241.3 sq. feet)



Total area: approx. 85.8 sq. metres (923.4 sq. feet)



20-22 Bridge End, Leeds, LS1 4DJ
t: 0330 004 0050 e: hello@bettermove.co.uk
www.bettermove.co.uk