



Anvil Close
Elton
Chester
Cheshire
CH2 4LA

Offers In Excess Of £219,000

bettermove

Anvil Close Chester

Bettermove are proud to present this 4 bedroom terraced house in Elton available with no forward chain.

The property is currently tenanted and it will be sold with tenants in situ for immediate investment. Rental yields can be obtained through Bettermove.

The property benefits from double glazing, gas central heating throughout and has off street parking available.

The council tax band is C.

The interior of this property comprises a spacious living room, w/c and fitted kitchen diner on the ground floor. The first floor consists of 3 bedrooms and the family bathroom. The second floor holds the 4th bedroom and shower room. The exterior boasts a private rear garden, perfect for enjoying the summer months.

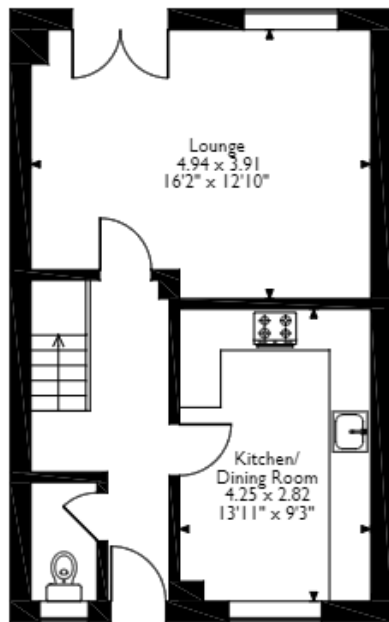
Located in the popular village of Elton, the property is close to a range of amenities, including shops, supermarkets, restaurants and pubs. Excellent transport connections can be found from Ince & Elton train station, M56 and local bus routes.

This exciting opportunity should not be missed! All enquiries can be made through Bettermove on 0330 004 0050.

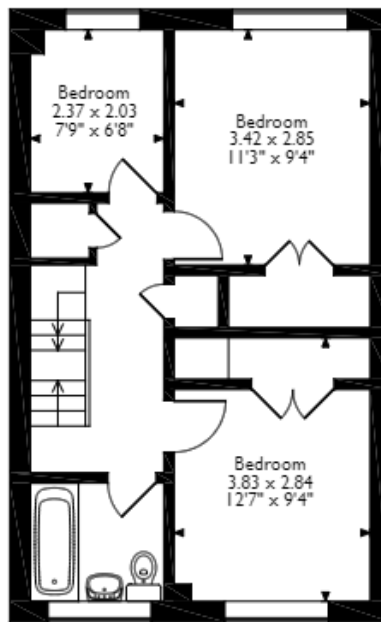


Anvil Close, Elton, Chester

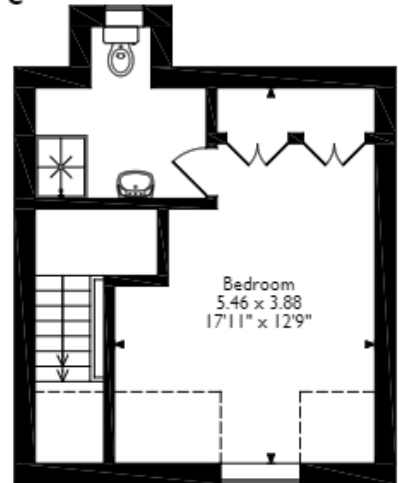
Approximate Gross Internal Area 106 Sq M / 1140 Sq Ft



Ground Floor



First Floor



Second Floor

Please note that the location of doors, windows and other items are approximate and this floorplan is to be used for illustrative purposes only. Unauthorized reproduction is prohibited.



20-22 Bridge End, Leeds, LS1 4DJ
t: 0330 004 0050 e: hello@bettermove.co.uk
www.bettermove.co.uk