



**Wickham Street
Leeds
West Yorkshire
LS11 7EJ**

Offers In Excess Of £157,000

bettermove

Wickham Street Leeds

Bettermove are proud to present this 4 bedroom terraced house in Leeds available with no forward chain.

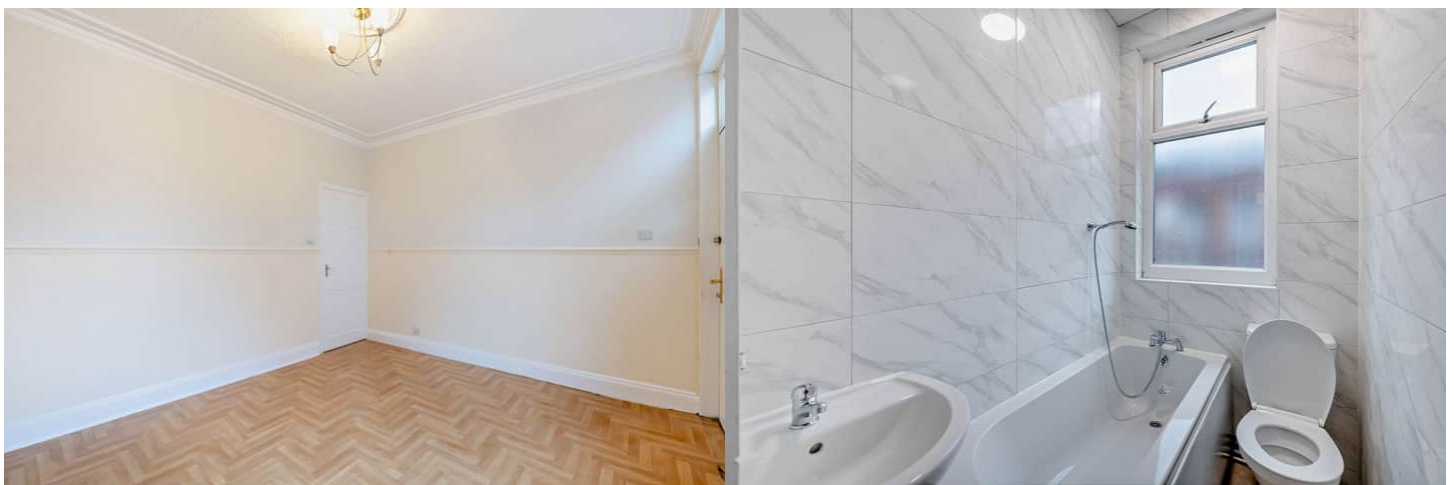
The property benefits from double glazing, gas central heating throughout.

The council tax band is A.

The interior of this property comprises a spacious living room and dining room, the lower ground floor holds a fitted kitchen, second dining room and w/c. The first floor consists of 2 bedrooms and the family bathroom. The second floor holds a further 2 bedrooms.

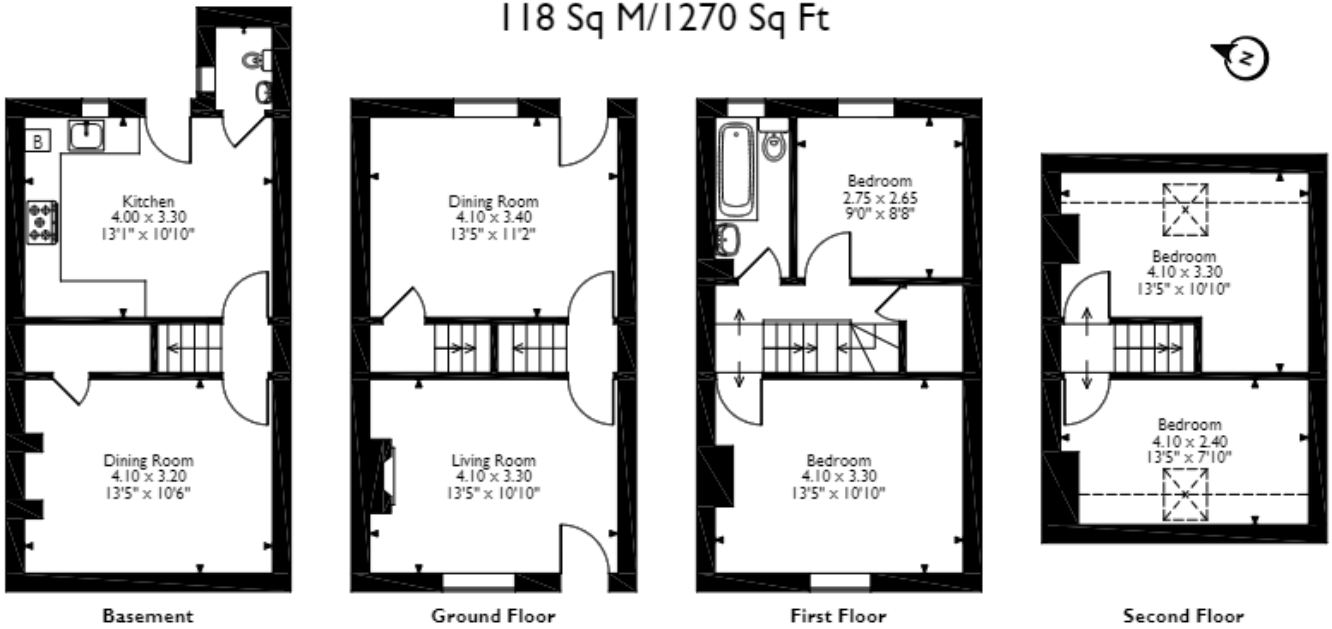
Located in the popular city of Leeds, the property is close to a range of amenities, including shops, supermarkets, restaurants and pubs. Excellent transport connections can be found from the M621, A643 and many local bus routes.

This exciting opportunity should not be missed! All enquiries can be made through Bettermove on 0330 004 0050.

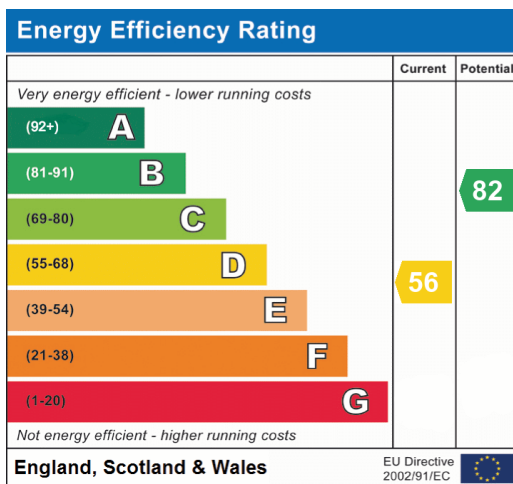


Wickham Street, Leeds

Approximate Gross Internal Area 118 Sq M/1270 Sq Ft



Please note that the location of doors, windows and other items are approximate and this floorplan is to be used for illustrative purposes only. Unauthorized reproduction is prohibited.





20-22 Bridge End, Leeds, LS1 4DJ
t: 0330 004 0050 e: hello@bettermove.co.uk
www.bettermove.co.uk