



**Kensington Court
Knyveton Road
Bournemouth
Dorset
BH1 3QT**

Offers In Excess Of £230,000

bettermove

Knyveton Road Bournemouth

Bettermove are proud to present this 2 bedroom flat in Bournemouth available with no forward chain.

The property benefits from double glazing, gas central heating throughout and has off street parking available via the secure underground car park.

The council tax band is E.

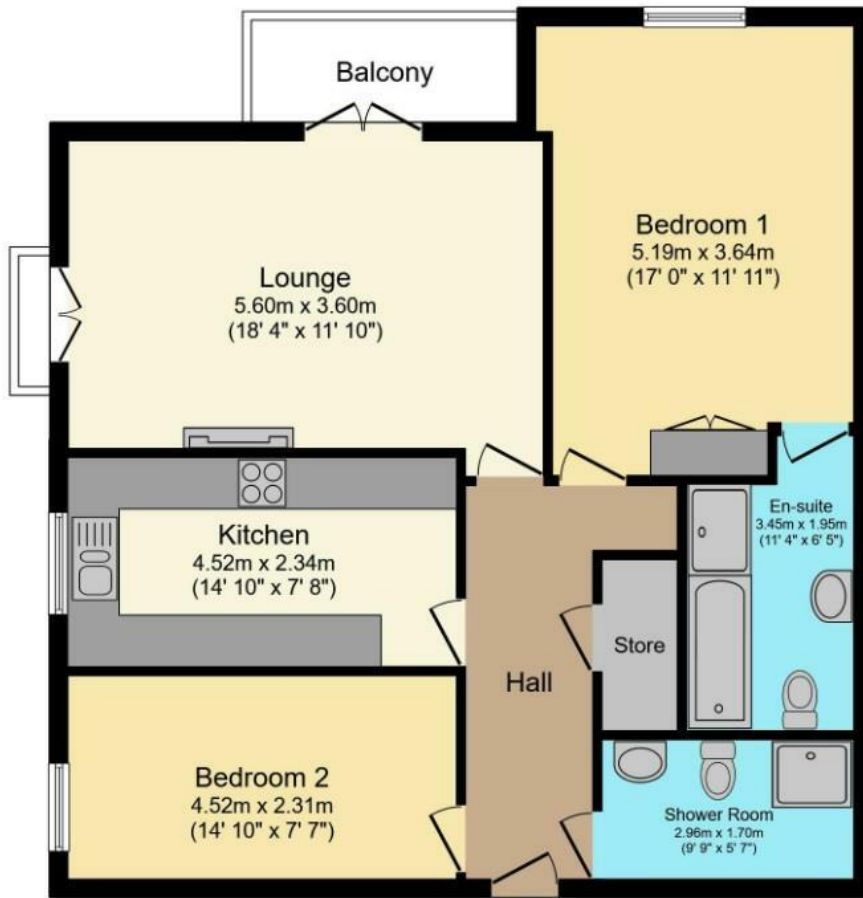
This is a leasehold property with 74 years remaining on the lease; the ground rent is £250pa and the service charge is £2,400pa.

The interior of this property comprises a spacious living room, fitted kitchen, 2 bedrooms, an en-suite and the family bathroom.

Located in the popular town of Bournemouth, the property is close to a range of amenities, including shops, supermarkets, restaurants and pubs. Excellent transport connections can be found from the A35, Bournemouth train station and local bus routes.

This exciting opportunity should not be missed! All enquiries can be made through Bettermove on 0330 004 0050.






Total floor area 83.4 sq.m. (898 sq.ft.) approx

This floor plan is for illustrative purposes only. It is not drawn to scale. Any measurements, floor areas (including any total floor area), openings and orientation are approximate. No details are guaranteed, they cannot be relied upon for any purpose and they do not form part of any agreement. No liability is taken for any error, omission or misstatement. A party must rely upon its own inspection(s). Plan produced for Purplebricks. Powered by www.focalagent.com

Acti
Go to

Energy Efficiency Rating		
	Current	Potential
<i>Very energy efficient - lower running costs</i>		
(92+) A		
(81-91) B	83	83
(69-80) C		
(55-68) D		
(39-54) E		
(21-38) F		
(1-20) G		
<i>Not energy efficient - higher running costs</i>		
England, Scotland & Wales		EU Directive 2002/91/EC 



20-22 Bridge End, Leeds, LS1 4DJ
t: 0330 004 0050 e: hello@bettermove.co.uk
www.bettermove.co.uk