



Stanley Street
Long Eaton
Nottingham
Derbyshire
NG10 1EY

Offers In Excess Of £266,000

bettermove 

Stanley Street Nottingham

Bettermove are proud to present this 4 bedroom detached house in Long Eaton available with no forward chain.

The property is currently tenanted and it will be sold with tenants in situ for immediate investment. Rental yields can be obtained through Bettermove.

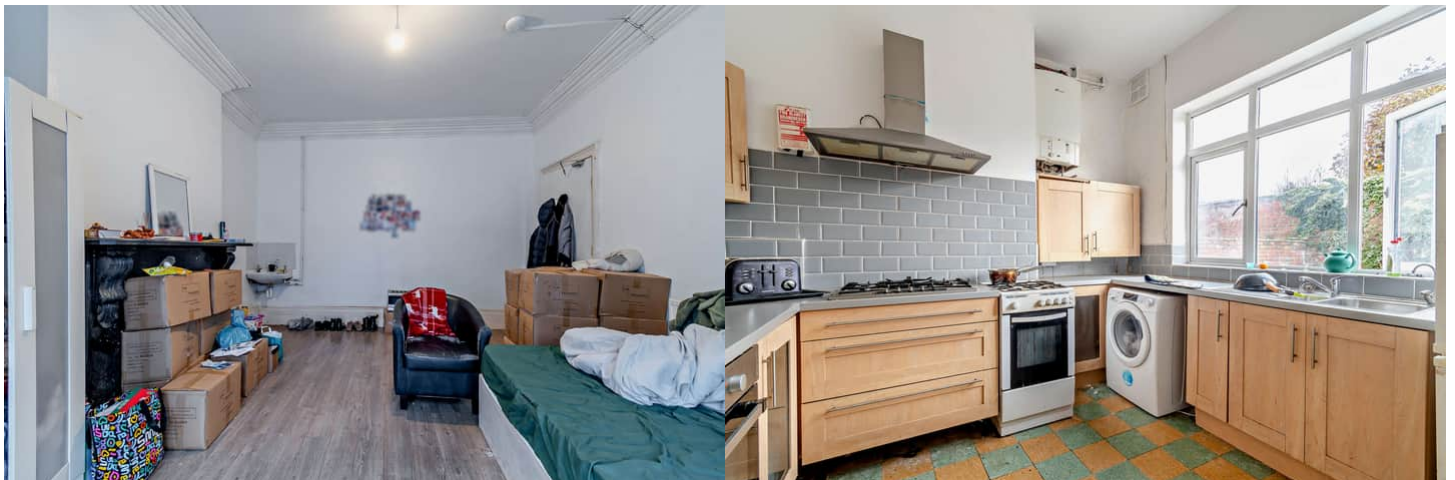
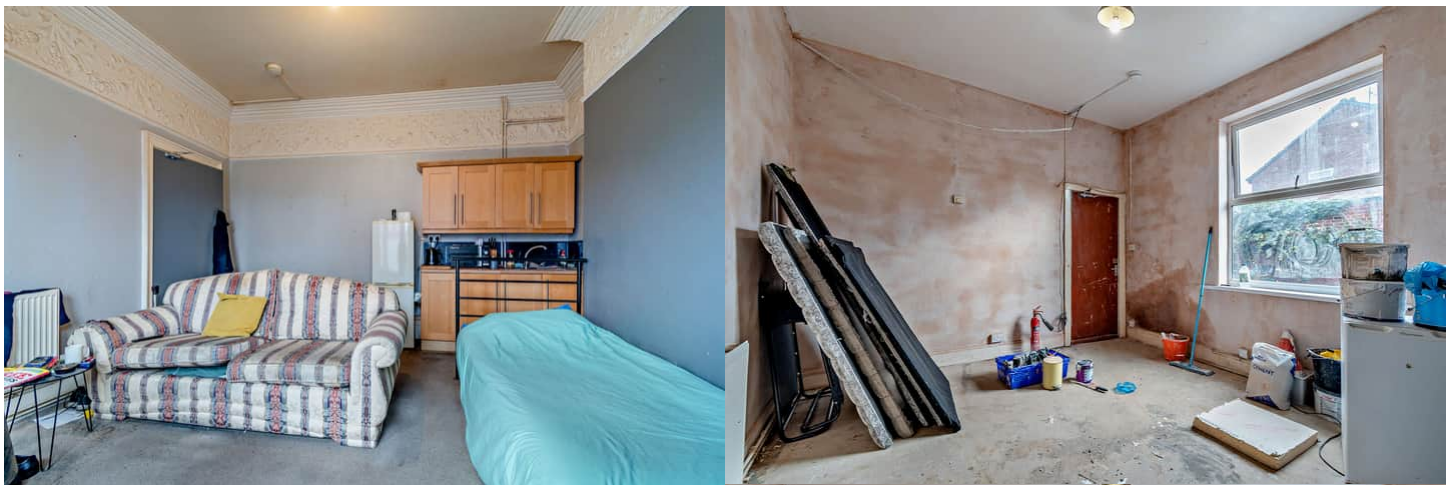
The property benefits from double glazing, gas central heating throughout.

The council tax band is B.

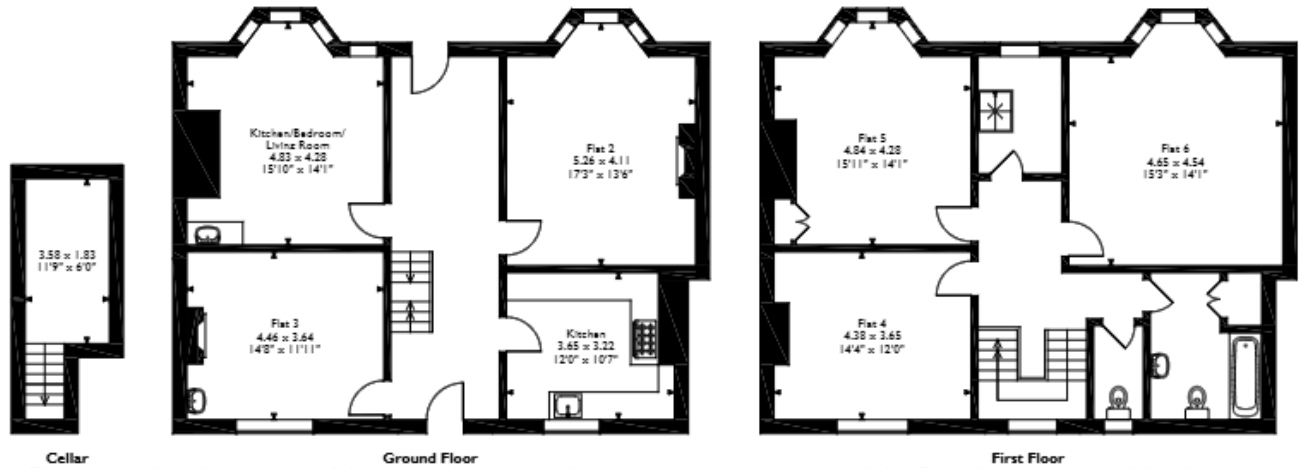
The interior of this property comprises 3 spacious reception rooms and fitted kitchen on the ground floor. The first floor consists of 3 bedrooms, w/c and the family bathroom. The exterior boasts a private rear yard, perfect for enjoying the summer months.

Located in the popular town of Long Eaton, the property is close to a range of amenities, including shops, supermarkets, restaurants and pubs. Excellent transport connections can be found from the A6005, Long Eaton train station and many local bus routes.

This exciting opportunity should not be missed! All enquiries can be made through Bettermove on 0330 004 0050



Stanley Street, Long Eaton, Nottingham, Derbyshire
 Approximate Gross Internal Area
 184 Sq M/1980 Sq Ft



Please note that the location of doors, windows and other items are approximate and this floorplan is to be used for illustrative purposes only. Unauthorized reproduction is prohibited.

Energy Efficiency Rating		
	Current	Potential
<i>Very energy efficient - lower running costs</i>		
(92+) A		
(81-91) B		83
(69-80) C		
(55-68) D	56	
(39-54) E		
(21-38) F		
(1-20) G		
<i>Not energy efficient - higher running costs</i>		
England, Scotland & Wales	EU Directive 2002/91/EC	



20-22 Bridge End, Leeds, LS1 4DJ
t: 0330 004 0050 e: hello@bettermove.co.uk
www.bettermove.co.uk