



**Station House
Macarthur Way
Stourport-on-Severn
Worcestershire
DY13 8BN**

Offers In Excess Of £100,000

bettermove

Macarthur Way Stourport-on-Severn

Bettermove are proud to present this 1 bedroom flat in Stourport-on-Severn available with no forward chain.

The property is currently tenanted and it will be sold with tenants in situ for immediate investment. Rental yields can be obtained through Bettermove.

The property benefits from double glazing, electric heating throughout and has off street parking available.

The council tax band is A.

This is a leasehold property with 150 years on the lease from 2006; the ground rent is £200pa and the service charge is £83pcm.

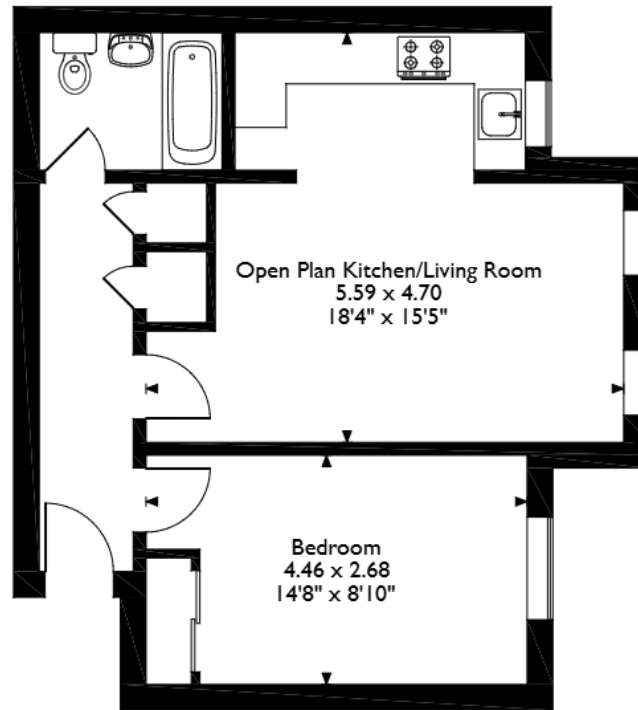
The interior of this property comprises a spacious living room, fitted kitchen, 1 bedroom and the bathroom.

Located in the popular town of Stourport-on-Severn, the property is close to a range of amenities, including shops, supermarkets, restaurants and pubs. Excellent transport connections can be found from the A451, A449 and many local bus routes.

This exciting opportunity should not be missed! All enquiries can be made through Bettermove on 0330 004 0050.



Station House, Macarthur Way,
Stourport-on-Severn, Worcestershire
Approximate Gross Internal Area
45 Sq M/484 Sq Ft



Ground Floor Flat

Please note that the location of doors, windows and other items are approximate and this floorplan is to be used for illustrative purposes only. Unauthorized reproduction is prohibited.



20-22 Bridge End, Leeds, LS1 4DJ
t: 0330 004 0050 e: hello@bettermove.co.uk
www.bettermove.co.uk