



**Fir Avenue
New Milton
Hampshire
BH25 6EU**

Offers In Excess Of £375,000

bettermove

Fir Avenue New Milton

Bettermove are proud to present this 3 bedroom detached bungalow in New Milton available with no forward chain.

The property benefits from double glazing, gas central heating throughout and has off street parking available.

The council tax band is E.

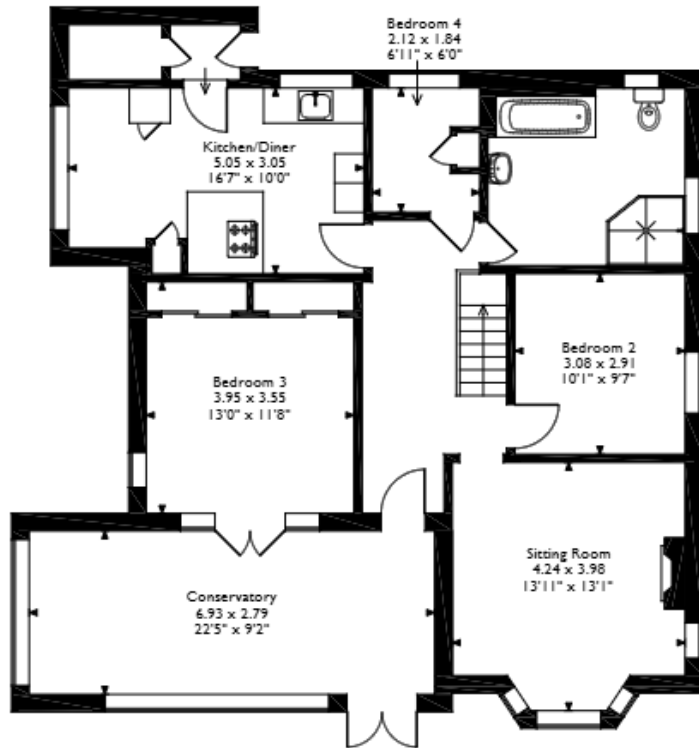
The interior of this property comprises a spacious living room, conservatory, 2 bedrooms, the family bathroom and fitted kitchen on the ground floor. The first floor consists of 1 bedroom. The exterior boasts a private rear garden, perfect for enjoying the summer months.

Located in the popular town of New Milton, the property is close to a range of amenities, including shops, supermarkets, restaurants and pubs. Excellent transport connections can be found from the A337, New Milton train station and local bus routes.

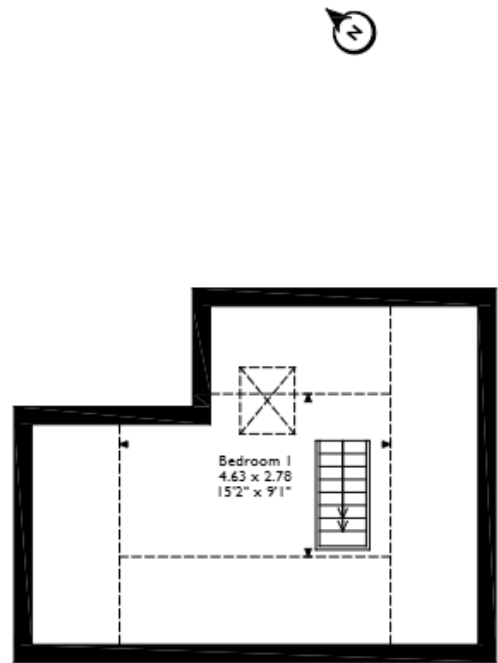
This exciting opportunity should not be missed! All enquiries can be made through Bettermove on 0330 004 0050.



Fir Avenue, New Milton, Hampshire
 Approximate Gross Internal Area
 119 Sq M/1281 Sq Ft



Ground Floor



Loft Room

Please note that the location of doors, windows and other items are approximate and this floorplan is to be used for illustrative purposes only. Unauthorized reproduction is prohibited.

Energy Efficiency Rating		
	Current	Potential
<i>Very energy efficient - lower running costs</i>		
(92+) A		
(81-91) B		
(69-80) C		
(55-68) D		66
(39-54) E		
(21-38) F		
(1-20) G	13	
<i>Not energy efficient - higher running costs</i>		
England, Scotland & Wales		EU Directive 2002/91/EC



20-22 Bridge End, Leeds, LS1 4DJ
t: 0330 004 0050 e: hello@bettermove.co.uk
www.bettermove.co.uk