



**Feidr Fawr  
St Dogmaels  
Cardigan  
Pembrokeshire  
SA43 3EU**

**Offers in Excess of £240,000**

**bettermove**

# Feidr Fawr

## Cardigan

Bettermove are proud to present this recently improved 4 bedroom Semi-Detached House in St Dogmaels available with no forward chain.

The property benefits from double glazing, gas central heating throughout and has off street parking available via the driveway and the garage. The council tax band is C.

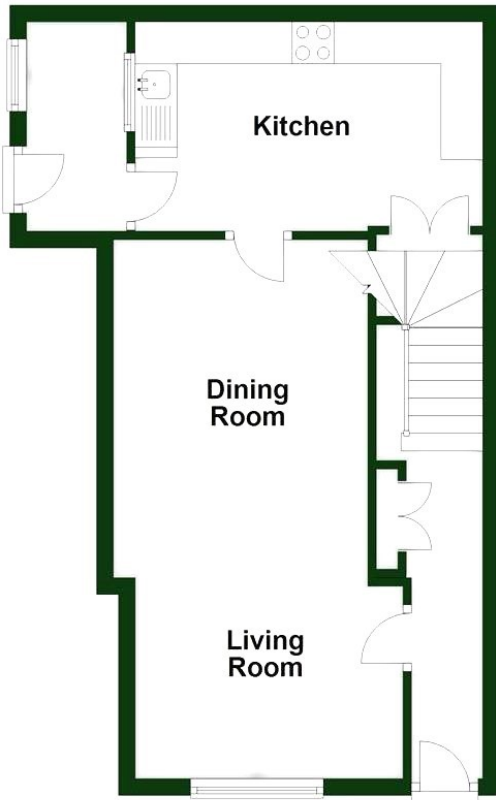
The interior of this beautifully presented property which has recently been renovated throughout by the current owners comprises a spacious living room with dining area, the fitted kitchen and a convenient WC on the ground floor. The first floor consists of three double bedrooms and the family bathroom. The second floor hosts the fourth bedroom with an ensuite bathroom. The exterior boasts a private rear garden, perfect for enjoying the summer months.

Located in the popular village of St Dogmaels just outside of Cardigan, the property is close to a range of amenities, including shops, supermarkets, restaurants and pubs. Excellent transport connections can be found from the A487 and many local bus routes.

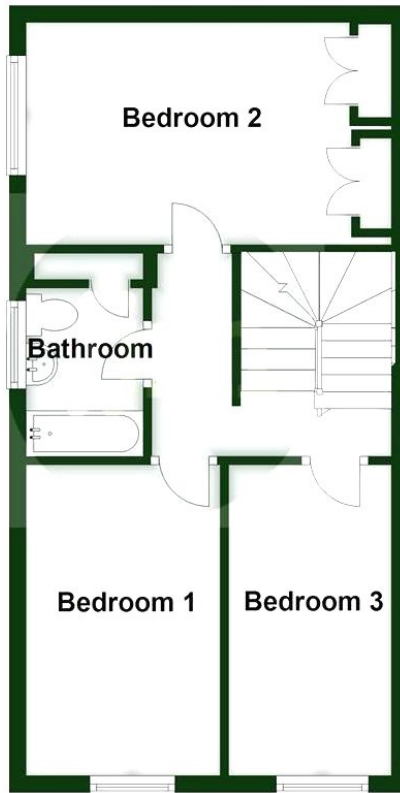
This exciting opportunity should not be missed! All enquiries can be made through Bettermove on 0330 004 0050.



Ground Floor




First Floor



Second Floor



Energy Efficiency Rating		
	Current	Potential
<i>Very energy efficient - lower running costs</i>		
(92+) <b>A</b>		
(81-91) <b>B</b>		<b>87</b>
(69-80) <b>C</b>		
(55-68) <b>D</b>	<b>63</b>	
(39-54) <b>E</b>		
(21-38) <b>F</b>		
(1-20) <b>G</b>		
<i>Not energy efficient - higher running costs</i>		
<b>England, Scotland &amp; Wales</b>		EU Directive 2002/91/EC 



20-22 Bridge End, Leeds, LS1 4DJ  
t: 0330 004 0050 e: [hello@bettermove.co.uk](mailto:hello@bettermove.co.uk)  
[www.bettermove.co.uk](http://www.bettermove.co.uk)