



**Avro Gardens
Hartlepool
Durham
TS25 2FA**

Offers In Excess Of £115,000

bettermove

Avro Gardens Hartlepool

Bettermove are proud to present this 2 bedroom semi-detached house in Hartlepool.

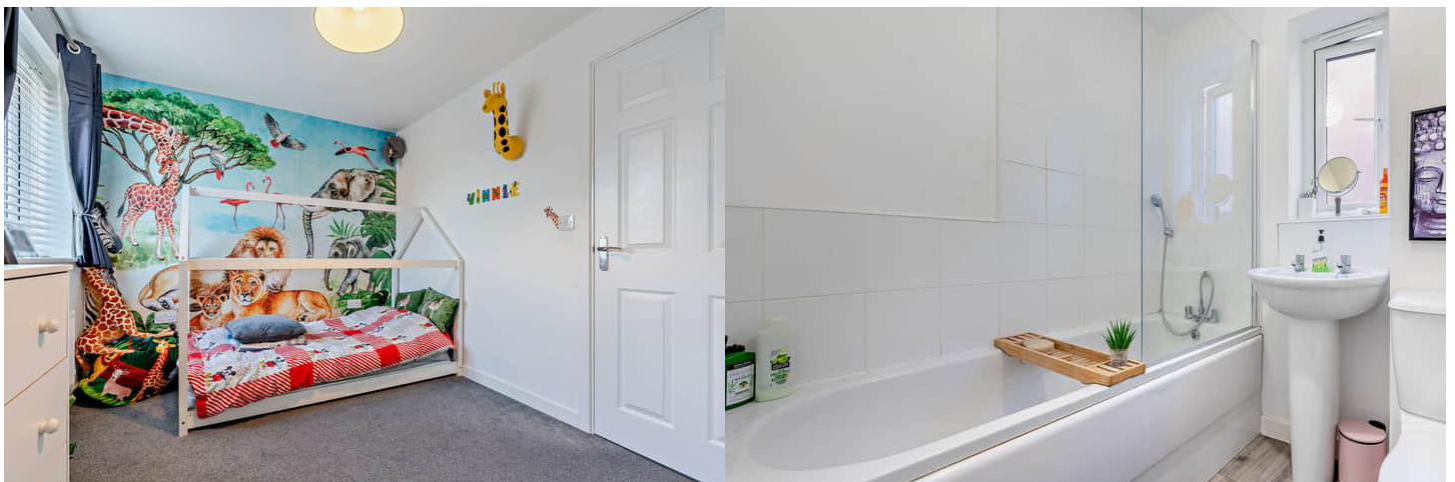
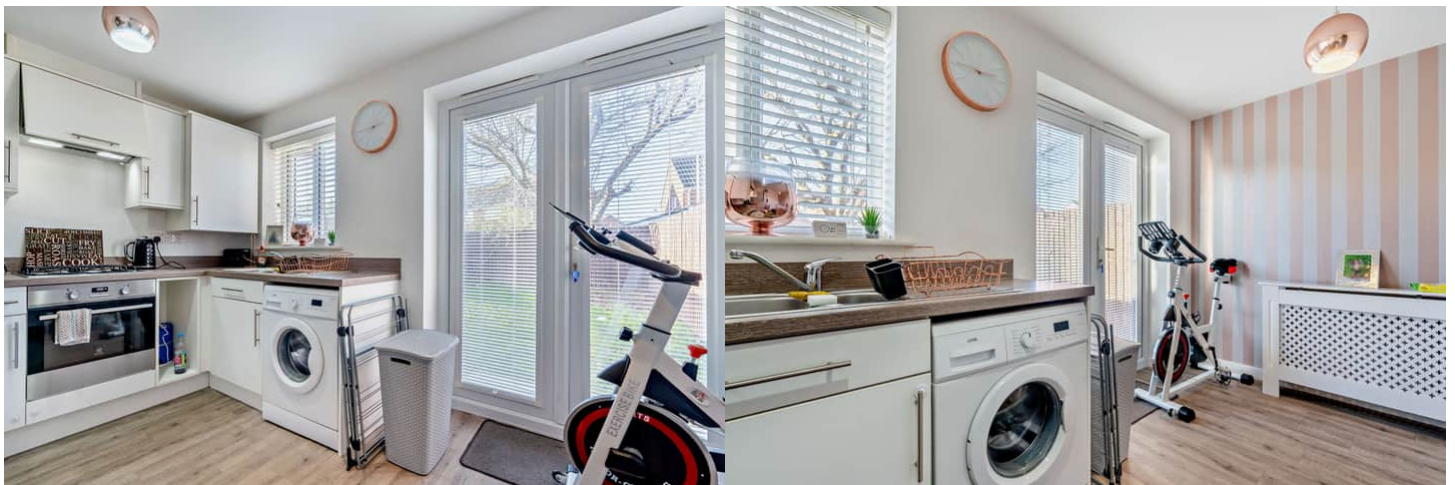
The property benefits from double glazing, gas central heating throughout and has off street parking available.

The council tax band is B.

The interior of this beautifully presented property comprises a spacious living room and fitted kitchen on the ground floor. The first floor consists of 2 bedrooms and the family bathroom. The exterior boasts a private rear garden, perfect for enjoying the summer months.

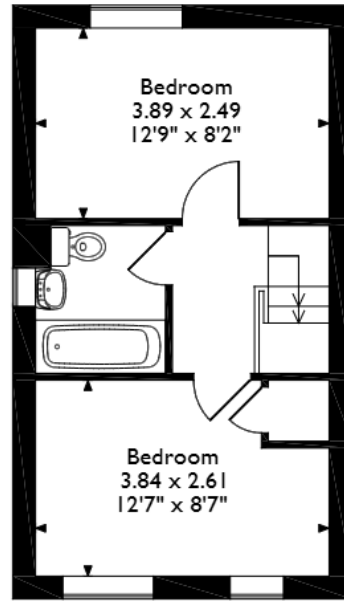
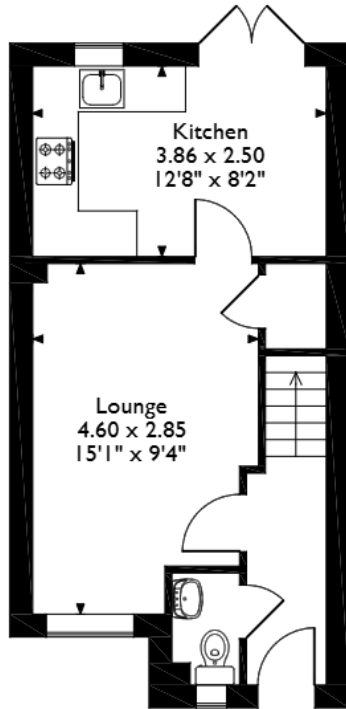
Located in the popular town of Hartlepool, the property is close to a range of amenities, including shops, supermarkets, restaurants and pubs. Excellent transport connections can be found from the A178, Seaton Carew train station and local bus routes.

This exciting opportunity should not be missed! All enquiries can be made through Bettermove on 0330 004 0050.



Avro Gardens, Hartlepool

Approximate Gross Internal Area 58 Sq M/624 Sq Ft



Please note that the location of doors, windows and other items are approximate and this floorplan is to be used for illustrative purposes only. Unauthorized reproduction is prohibited.

Energy Efficiency Rating		Current	Potential
Very energy efficient - lower running costs			
(92+)	A		97
(81-91)	B	83	
(69-80)	C		
(55-68)	D		
(39-54)	E		
(21-38)	F		
(1-20)	G		
Not energy efficient - higher running costs			
England, Scotland & Wales		EU Directive 2002/91/EC	



20-22 Bridge End, Leeds, LS1 4DJ
t: 0330 004 0050 e: hello@bettermove.co.uk
www.bettermove.co.uk