



**Stevenson Drive
Oldham
Lancashire
OL1 4RS**

Offers In Excess Of £225,000

bettermove

Stevenson Drive Oldham

Bettermove are proud to present this 3 bedroom terraced house in Oldham available with no forward chain.

The property benefits from double glazing, gas central heating throughout and has off street parking available.

The council tax band is B.

The interior of this property comprises a spacious living room, w/c and fitted kitchen on the ground floor. The first floor consists of 2 bedrooms and the family bathroom. The third floor holds the master bedroom with en-suite shower room. The exterior boasts a private rear garden, perfect for enjoying the summer months.

Located in the popular town of Oldham, the property is close to a range of amenities, including shops, supermarkets, restaurants and pubs. Excellent transport connections can be found from the A672, A62 and local bus routes.

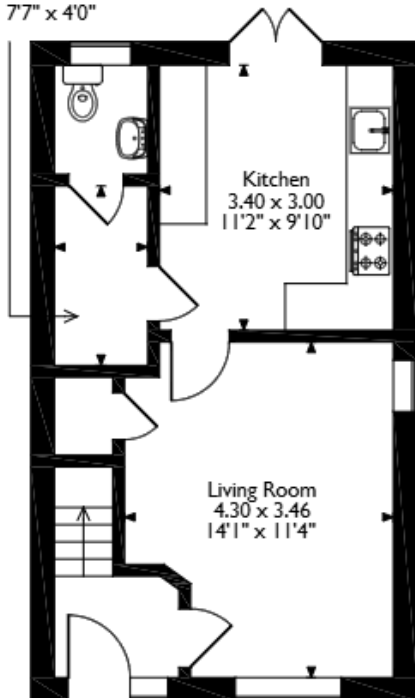
This exciting opportunity should not be missed! All enquiries can be made through Bettermove on 0330 004 0050.



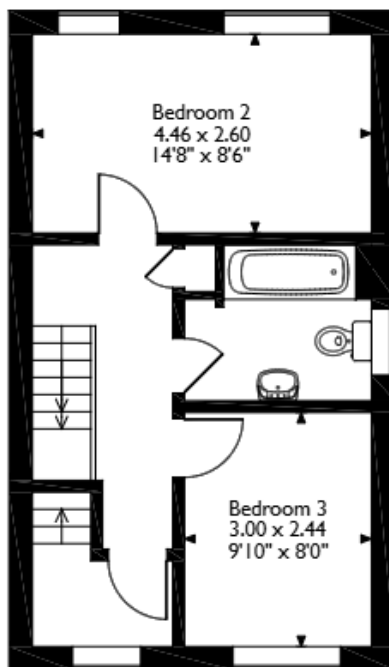
Stevenson Drive, Oldham

Approximate Gross Internal Area 94 Sq M/1012 Sq Ft

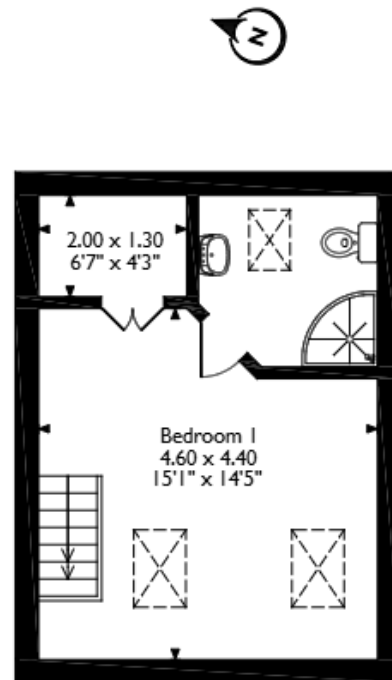
Utility
2.30 x 1.22
7'7" x 4'0"



Ground Floor



First Floor



Second Floor

Please note that the location of doors, windows and other items are approximate and this floorplan is to be used for illustrative purposes only. Unauthorized reproduction is prohibited.

Energy Efficiency Rating		
	Current	Potential
Very energy efficient - lower running costs		
(92+) A		95
(81-91) B	84	
(69-80) C		
(55-68) D		
(39-54) E		
(21-38) F		
(1-20) G		
Not energy efficient - higher running costs		
England, Scotland & Wales	EU Directive 2002/91/EC	



20-22 Bridge End, Leeds, LS1 4DJ
t: 0330 004 0050 e: hello@bettermove.co.uk
www.bettermove.co.uk