



**Moores Yard
Wingfield
Trowbridge
Wiltshire
BA14 9NZ**

Offers In Excess Of £500,000

bettermove

Moore's Yard Trowbridge

Bettermove are proud to present this 4 bedroom semi-detached house in Wingfield.

The property benefits from double glazing, gas central heating throughout and has off street parking available via the garage.

The council tax band is F.

The interior of this property comprises a spacious living room, dining room, office, w/c and fitted kitchen on the ground floor. The first floor consists of 4 bedrooms, an en-suite and the family bathroom. The exterior boasts a private rear garden, perfect for enjoying the summer months.

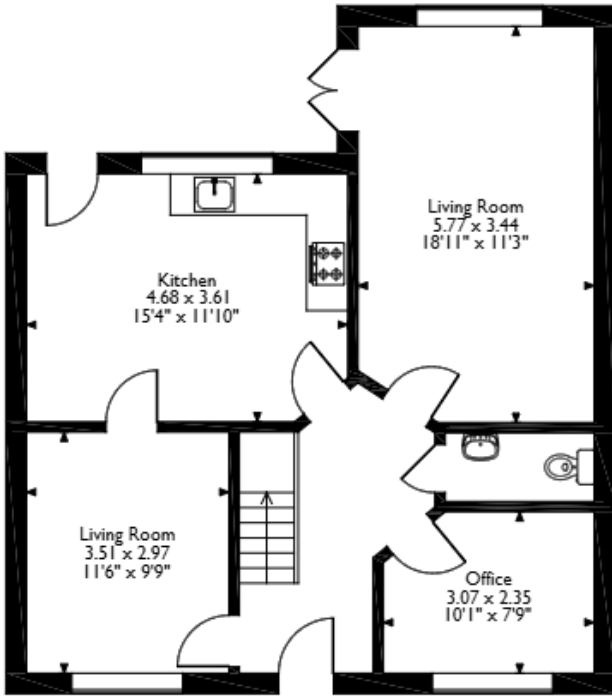
Located in the popular town of Trowbridge, the property is close to a range of amenities, including shops, supermarkets, restaurants and pubs. Excellent transport connections can be found from the A366, A361 and local bus routes.

This exciting opportunity should not be missed! All enquiries can be made through Bettermove on 0330 004 0050.

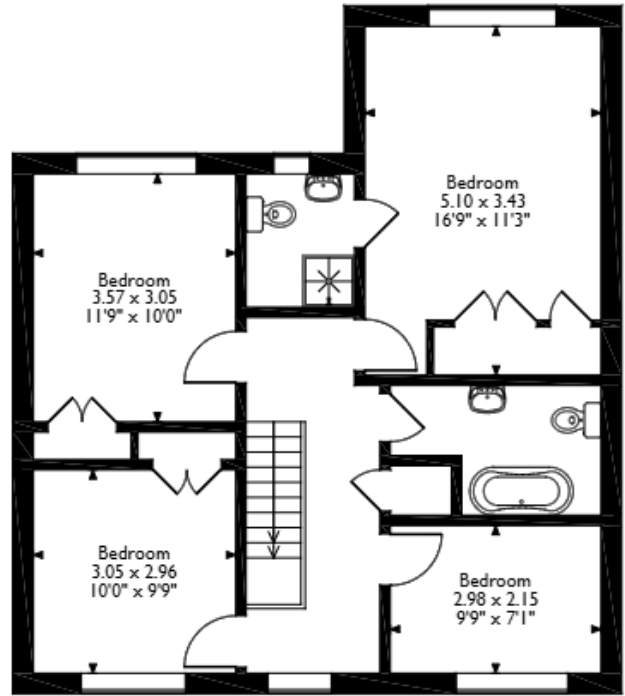


Moores Yard, Wingfield, Trowbridge

Approximate Gross Internal Area 136 Sq M / 1464 Sq Ft



Ground Floor



First Floor

Please note that the location of doors, windows and other items are approximate and this floorplan is to be used for illustrative purposes only. Unauthorized reproduction is prohibited.

Energy Efficiency Rating		Current	Potential
<i>Very energy efficient - lower running costs</i>			
(92+)	A		
(81-91)	B		
(69-80)	C		
(55-68)	D		58
(39-54)	E		
(21-38)	F	30	
(1-20)	G		
<i>Not energy efficient - higher running costs</i>			
England, Scotland & Wales		EU Directive 2002/91/EC	



20-22 Bridge End, Leeds, LS1 4DJ
t: 0330 004 0050 e: hello@bettermove.co.uk
www.bettermove.co.uk