



Cyprus Road
Portsmouth
Hampshire
PO2 7QA

Offers In Excess Of £205,000

bettermove

Cyprus Road Portsmouth

Bettermove are proud to present this 2 bedroom terraced house in Portsmouth available with no forward chain.

The property is currently tenanted and it will be sold with tenants in situ for immediate investment. Rental yields can be obtained through Bettermove.

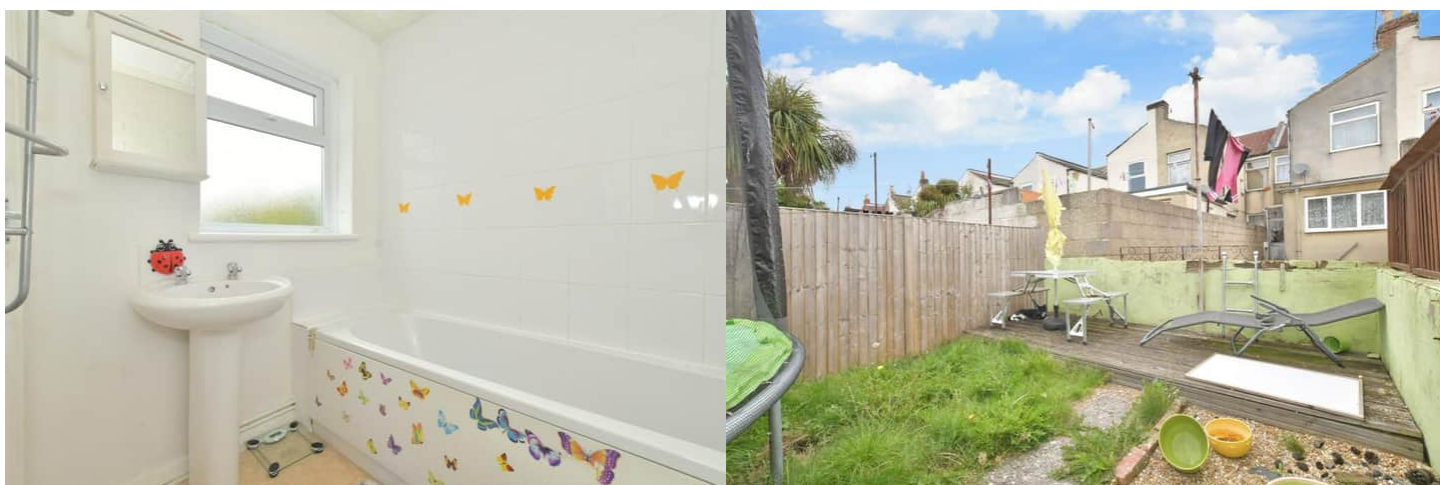
The property benefits from double glazing, gas central heating throughout.

The council tax band is B.

The interior of this property comprises a spacious living room, fitted kitchen and bathroom on the ground floor. The first floor consists of 2 bedrooms. The exterior boasts a private rear garden, perfect for enjoying the summer months.

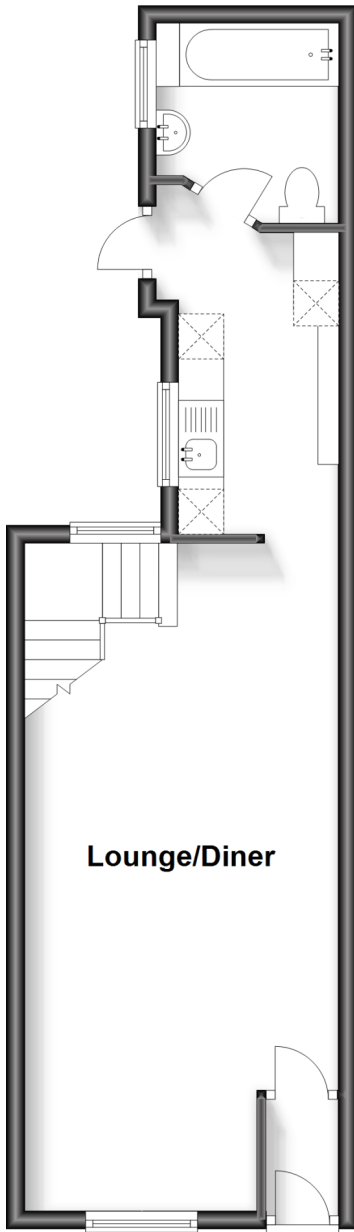
Located in the popular city of Portsmouth, the property is close to a range of amenities, including shops, supermarkets, restaurants and pubs. Excellent transport connections can be found from the M275, A3 and many local bus routes.

This exciting opportunity should not be missed! All enquiries can be made through Bettermove on 0330 004 0050.



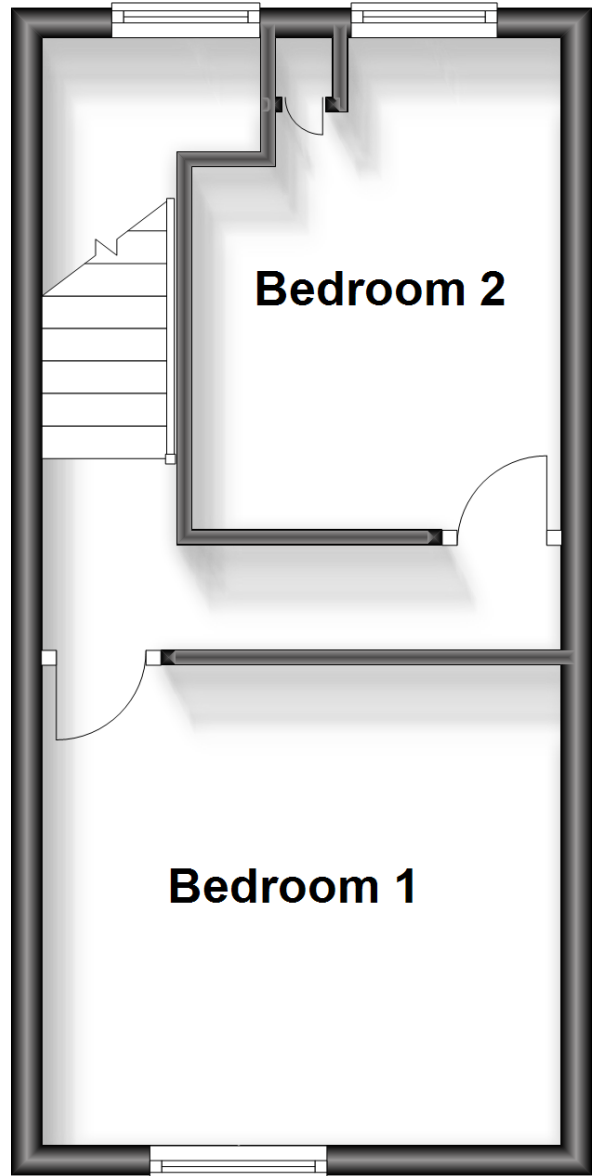
Ground Floor

Approx. 36.9 sq. metres (397.0 sq. feet)



First Floor

Approx. 25.9 sq. metres (278.4 sq. feet)



Energy Efficiency Rating		
	Current	Potential
<i>Very energy efficient - lower running costs</i>		
(92+) A		
(81-91) B		81
(69-80) C		
(55-68) D	60	
(39-54) E		
(21-38) F		
(1-20) G		
<i>Not energy efficient - higher running costs</i>		
England, Scotland & Wales	EU Directive 2002/91/EC	

20-22 Bridge End, Leeds, LS1 4DJ
t: 0330 004 0050 e: hello@bettermove.co.uk
www.bettermove.co.uk