



**Stirling House  
Kingston Road  
Portsmouth  
Hampshire  
PO2 7EE**

**Offers In Excess Of £142,000**

**bettermove**

# Kingston Road Portsmouth

Bettermove are proud to present this 2 bedroom flat in Portsmouth available with no forward chain.

The property is currently tenanted and it will be sold with tenants in situ for immediate investment. Rental yields can be obtained through Bettermove.

The property benefits from double glazing, electric heating throughout and has off street parking available via the allocated parking space.

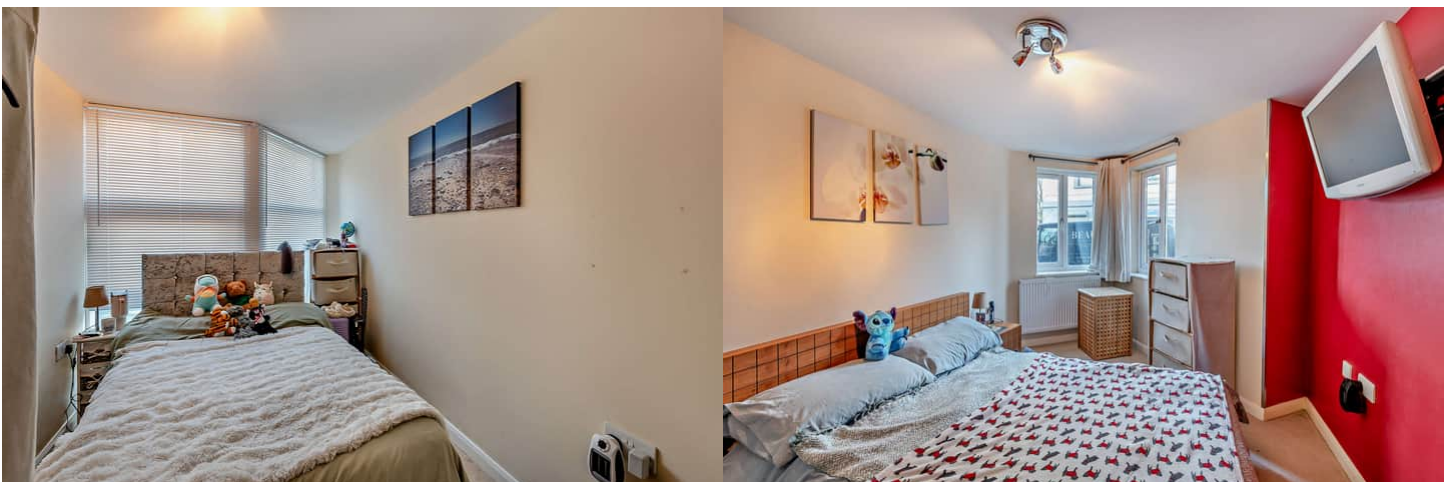
The council tax band is B .


This is a leasehold property with 126 years on the lease from 2007; the ground rent is £175pa and the service charge is £1,000pa.

The interior of this property comprises a spacious open plan living area consisting of living room, dining area and fitted kitchen. Down the hallway there is 2 bedrooms and bathroom.

Located in the popular residential community area of Buckland, the property is close to a range of amenities, including shops, supermarkets, restaurants and pubs. Excellent transport connections can be found from the M275, A27 and public transport routes.

This exciting opportunity should not be missed! All enquiries can be made through Bettermove on 0330 004 0050.



Energy Efficiency Rating		
	Current	Potential
<i>Very energy efficient - lower running costs</i>		
(92+) <b>A</b>		
(81-91) <b>B</b>		
(69-80) <b>C</b>	76	77
(55-68) <b>D</b>		
(39-54) <b>E</b>		
(21-38) <b>F</b>		
(1-20) <b>G</b>		
<i>Not energy efficient - higher running costs</i>		
<b>England, Scotland &amp; Wales</b>	EU Directive 2002/91/EC	



20-22 Bridge End, Leeds, LS1 4DJ  
t: 0330 004 0050 e: hello@bettermove.co.uk  
[www.bettermove.co.uk](http://www.bettermove.co.uk)