



**St Johns Close  
Sowerby Bridge  
West Yorkshire  
HX6 4RL**

**Offers in Excess of £135,000**

**bettermove**

# St Johns Close

## Sowerby Bridge

Bettermove are proud to welcome to the market this 3 bedroom terraced house in Sowerby Bridge with excellent potential and no forward chain. The property requires a round of refurbishment to bring it up to its full potential. The council tax band is A.

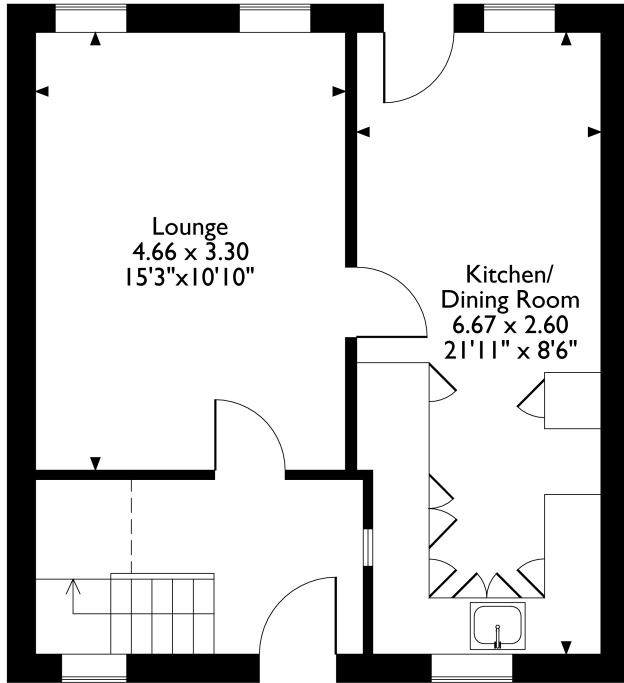
The interior of this property consists of a living room and kitchen/dining room on the ground floor. The first floor comprises 3 bedrooms and the family bathroom. The exterior boasts a garden, perfect for enjoying the summer months.

Located in the popular town of Sowerby Bridge, the property is close to a wide range of amenities, including supermarkets, shops, restaurants and pubs. Transport connections can be found from the A672, A58 and local bus routes.

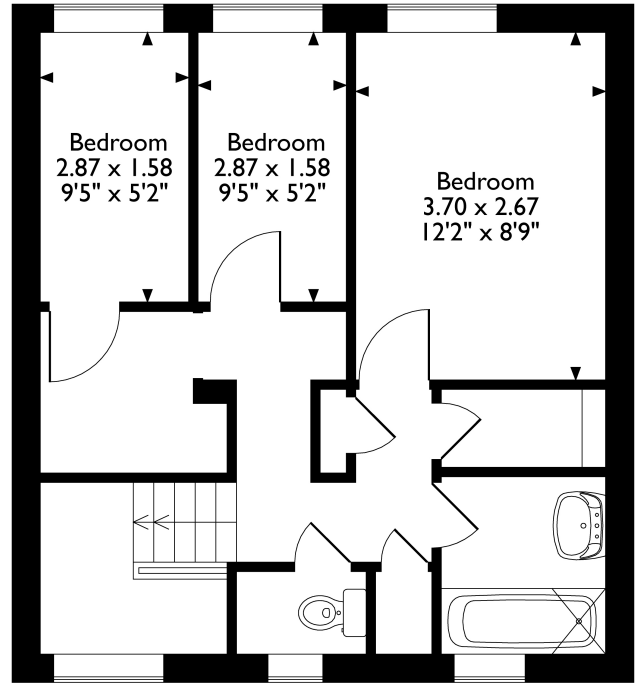
The property has been attractively priced to sell. We invite all buyers in a position to proceed to view. This exciting investment opportunity should not be missed and all enquiries can be made through Bettermove on 0330 004 0050.



St. Johns Close, Sowerby Bridge  
Approximate Gross Internal Area  
80 Sq M/862 Sq Ft



**Ground Floor**



**First Floor**

Please note that the location of doors, windows and other items are approximate and this floorplan is to be used for illustrative purposes only. Unauthorized reproduction is prohibited.



20-22 Bridge End, Leeds, LS1 4DJ  
t: 0330 004 0050 e: hello@bettermove.co.uk  
[www.bettermove.co.uk](http://www.bettermove.co.uk)