



**Kettering Drive
Stoke-on-Trent
Staffordshire
ST2 9LX**

Offers in Excess of £128,000

bettermove

Kettering Drive Stoke-on-Trent

Bettermove are proud to present this 3 bedroom Terraced House in Stoke-on-Trent available with no forward chain.

The property benefits from double glazing, gas central heating throughout and has off street parking available via the driveway. The council tax band is B.

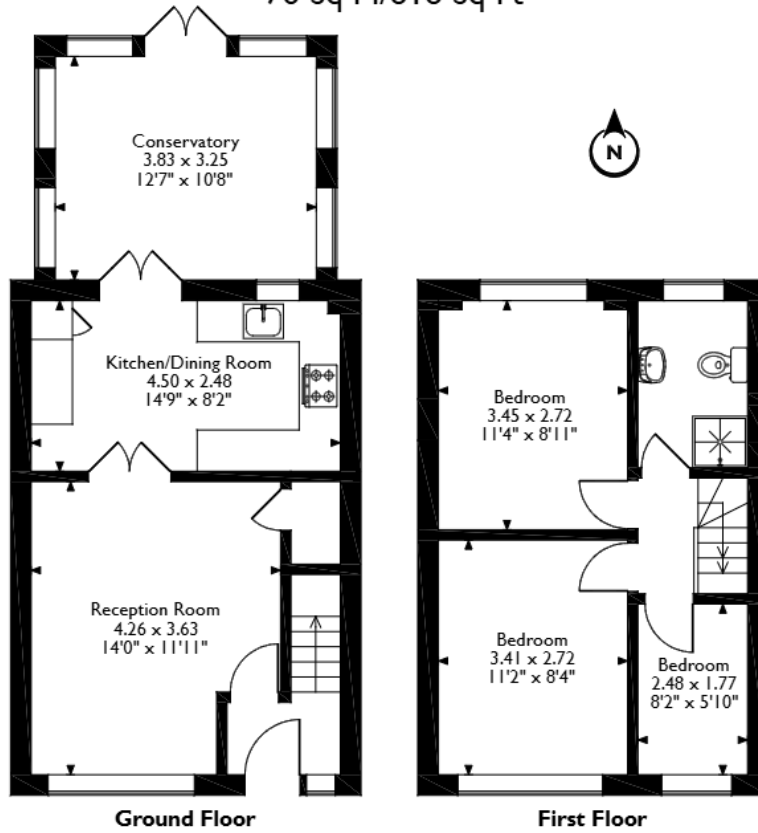
The interior of this well presented property comprises a spacious living room, the fitted kitchen with dining area and the conservatory on the ground floor. The first floor consists of three bedrooms and the family bathroom. The exterior boasts a private rear garden, perfect for enjoying the summer months.

Located in the popular town of Stoke-on-Trent, the property is close to a range of amenities, including shops, supermarkets, restaurants and pubs. Excellent transport connections can be found from Stoke-on-Trent Train Station, the A52 and many local bus routes.

This exciting opportunity should not be missed! All enquiries can be made through Bettermove on 0330 004 0050.



Kettering Drive, Stoke-on-Trent
Approximate Gross Internal Area
76 Sq M/818 Sq Ft



Please note that the location of doors, windows and other items are approximate and this floorplan is to be used for illustrative purposes only. Unauthorized reproduction is prohibited.



20-22 Bridge End, Leeds, LS1 4DJ
t: 0330 004 0050 e: hello@bettermove.co.uk
www.bettermove.co.uk