



**135 Hedge Lane
London
N13 5BY**

Offers in Excess of £580,000

bettermove

Hedge Lane London

Bettermove are proud to present this 3 bedroom Terraced House in the heart of Palmers Green.

The property benefits from double glazing, gas central heating throughout and has off street parking available. The council tax band is E.

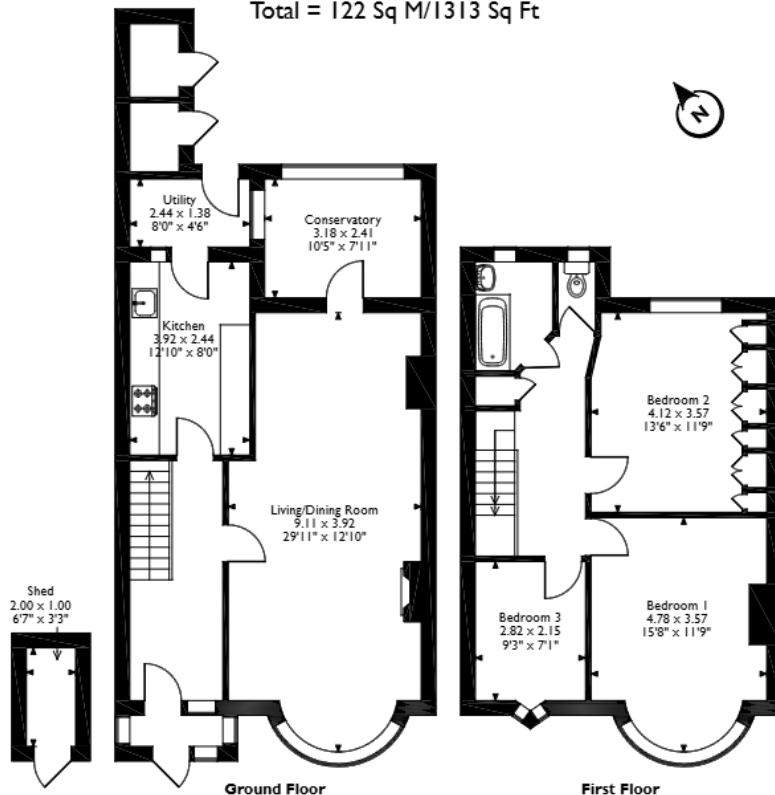
The interior of this well presented property comprises a spacious and open plan living room with the dining area, the fitted kitchen, conservatory, utility room and ample storage space throughout on the ground floor. The first floor consists of three bedrooms and the family bathroom with a separate WC. The exterior of the property boasts a private rear garden, perfect for enjoying the summer months.

Located in the sought after residential area of Palmers Green, the property is close to a range of amenities, including shops, supermarkets, restaurants and pubs. Excellent transport connections are within walking distance to Palmers Green Mainline Station, A10 & A406 and many local bus routes.

This exciting opportunity should not be missed! All enquiries can be made through Bettermove on 0330 004 0050.



Hedge Lane, London
 Approximate Gross Internal Area
 Main House = 117 Sq M/1259 Sq Ft
 Outbuildings = 5 Sq M/54 Sq Ft
 Total = 122 Sq M/1313 Sq Ft



Please note that the location of doors, windows and other items are approximate and this floorplan is to be used for illustrative purposes only. Unauthorized reproduction is prohibited.

Energy Efficiency Rating		
	Current	Potential
<i>Very energy efficient - lower running costs</i>		
(92+) A		
(81-91) B		86
(69-80) C	74	
(55-68) D		
(39-54) E		
(21-38) F		
(1-20) G		
<i>Not energy efficient - higher running costs</i>		
England, Scotland & Wales	EU Directive 2002/91/EC	



20-22 Bridge End, Leeds, LS1 4DJ
t: 0330 004 0050 e: hello@bettermove.co.uk
www.bettermove.co.uk