



**Beech Grove
Knott End-on-Sea
Poulton-le-Fylde
Lancashire
FY6 0AL**

Offers in Excess of £212,000

bettermove

Beech Grove Poulton-le-Fylde

Bettermove are proud to present this 3 bedroom terraced house in Knott End-on-Sea.

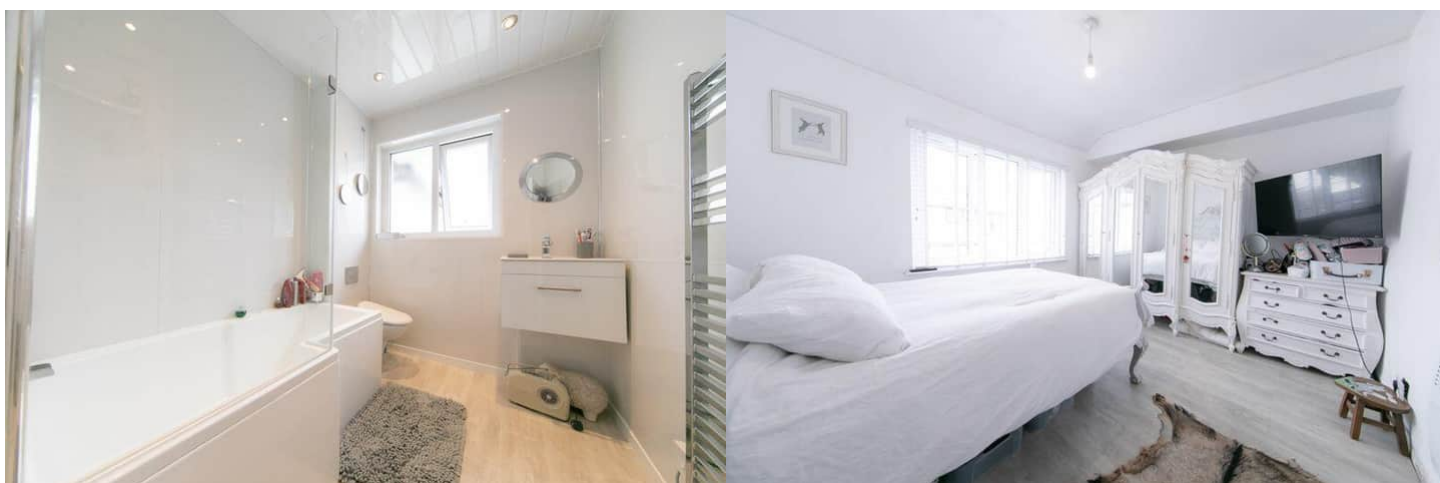
The property benefits from double glazing, gas central heating throughout.

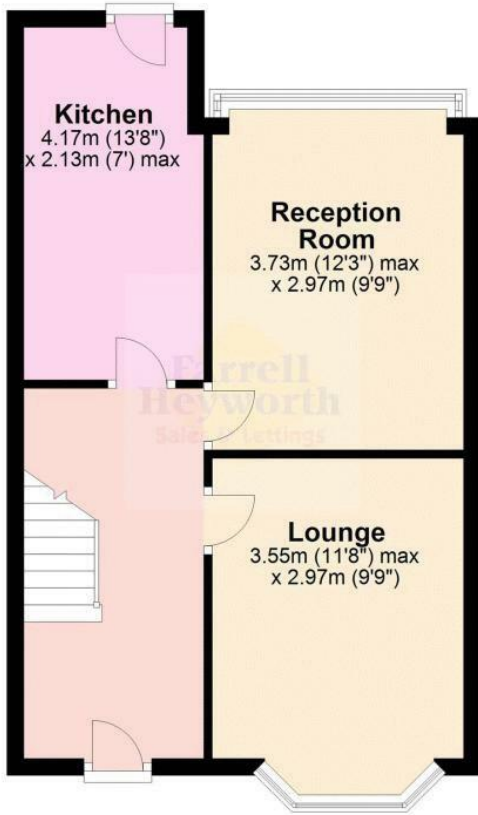
The council tax band is C.

The interior of this beautifully presented property comprises a spacious living room, dining room and fitted kitchen on the ground floor. The first floor consists of 3 bedrooms and the family bathroom. The exterior boasts a private rear garden, perfect for enjoying the summer months.

Located in the popular village of Knott End-on-Sea, the property is close to a range of amenities, including shops, supermarkets, restaurants and pubs. Excellent transport connections can be found from the A588 and many local bus routes.

This exciting opportunity should not be missed! All enquiries can be made through Bettermove on 0330 004 0050.





Ground Floor



First Floor

Energy Efficiency Rating		Current	Potential
Very energy efficient - lower running costs			
(92+)	A		
(81-91)	B		84
(69-80)	C		
(55-68)	D		
(39-54)	E		
(21-38)	F	23	
(1-20)	G		
Not energy efficient - higher running costs			
England, Scotland & Wales		EU Directive 2002/91/EC	



20-22 Bridge End, Leeds, LS1 4DJ
t: 0330 004 0050 e: hello@bettermove.co.uk
www.bettermove.co.uk