



Station Road
Foulsham
Dereham
Norfolk
NR20 5RD

Offers in Excess of £215,000

bettermove 

Station Road Dereham

Bettermove are proud to present this 2 bedroom Cottage in Foulsham tenanted for immediate investment and available with no forward chain.

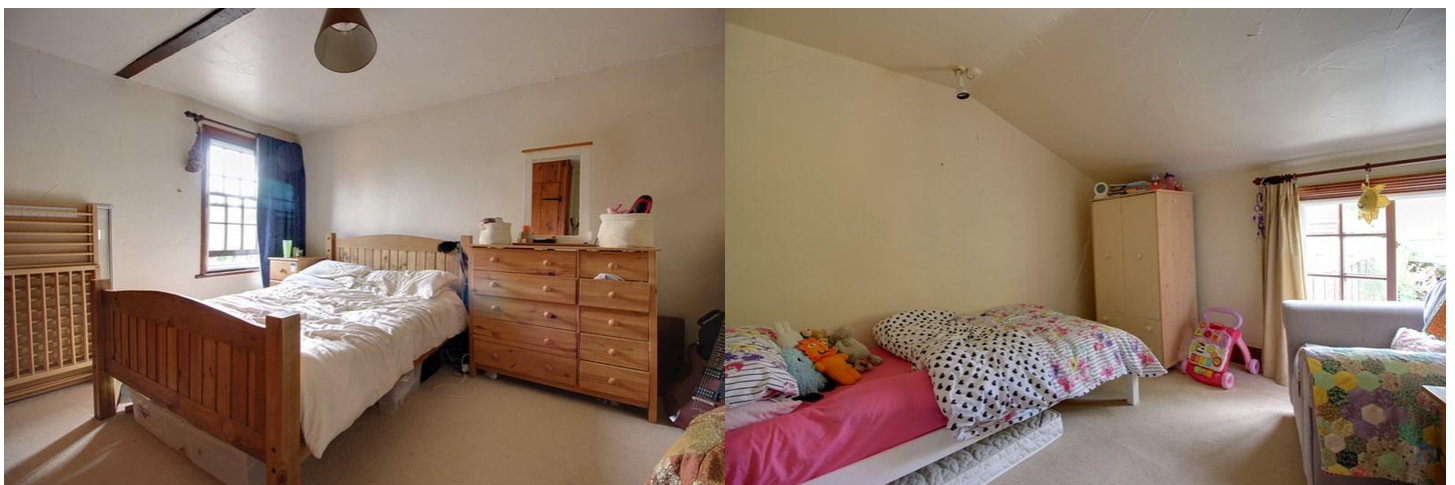
The property is currently tenanted and it will be sold with tenants in situ for immediate investment. Rental yields can be obtained through Bettermove.

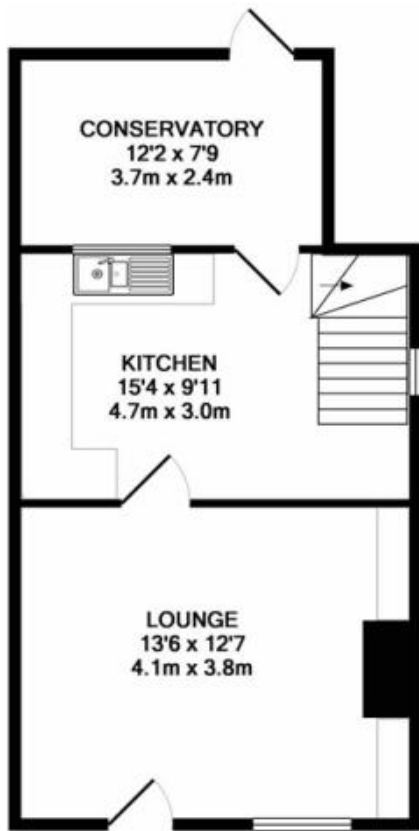
The property benefits from double glazing, oil heating throughout and has parking available via the drive. The council tax band is B.

The interior of this beautifully presented property comprises a spacious living room, the fitted kitchen and the conservatory on the ground floor. The first floor consists of 2 bedrooms and the family bathroom. The exterior boasts a private rear garden, perfect for enjoying the summer months.

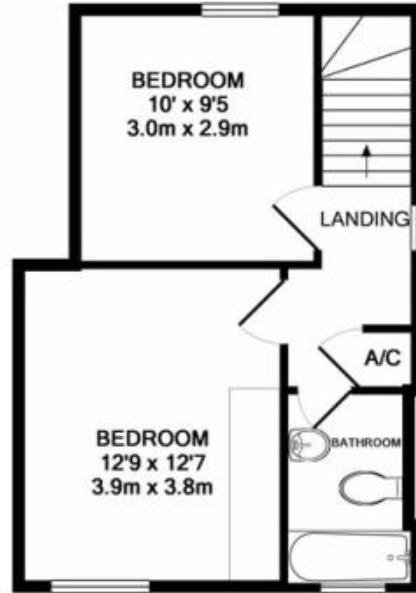
Located in the popular village of Foulsham, the property is close to a range of amenities, including shops, supermarkets, restaurants and pubs. Excellent transport connections can be found from local transport.

This exciting opportunity should not be missed! All enquiries can be made through Bettermove on 0330 004 0050.





GROUND FLOOR
APPROX. FLOOR
AREA 436 SQ.FT.
(40.5 SQ.M.)



1ST FLOOR
APPROX. FLOOR
AREA 326 SQ.FT.
(30.3 SQ.M.)

TOTAL APPROX. FLOOR AREA 762 SQ.FT. (70.8 SQ.M.)
Measurements are approximate. Not to scale. Illustrative purposes only
Made with Metropix ©2017

Energy Efficiency Rating		Current	Potential
Very energy efficient - lower running costs			
(92+)	A		100
(81-91)	B		
(69-80)	C		
(55-68)	D		
(39-54)	E	53	
(21-38)	F		
(1-20)	G		
Not energy efficient - higher running costs			
England, Scotland & Wales		EU Directive 2002/91/EC	

20-22 Bridge End, Leeds, LS1 4DJ
t: 0330 004 0050 e: hello@bettermove.co.uk
www.bettermove.co.uk