



**Gigant Street
Salisbury
Wiltshire
SP1 2DL**

Offers in Excess of £375,000

bettermove

Gigant Street Salisbury

Bettermove are proud to present this 3 bedroom End of Terrace House in the heart of Salisbury available with no forward chain.

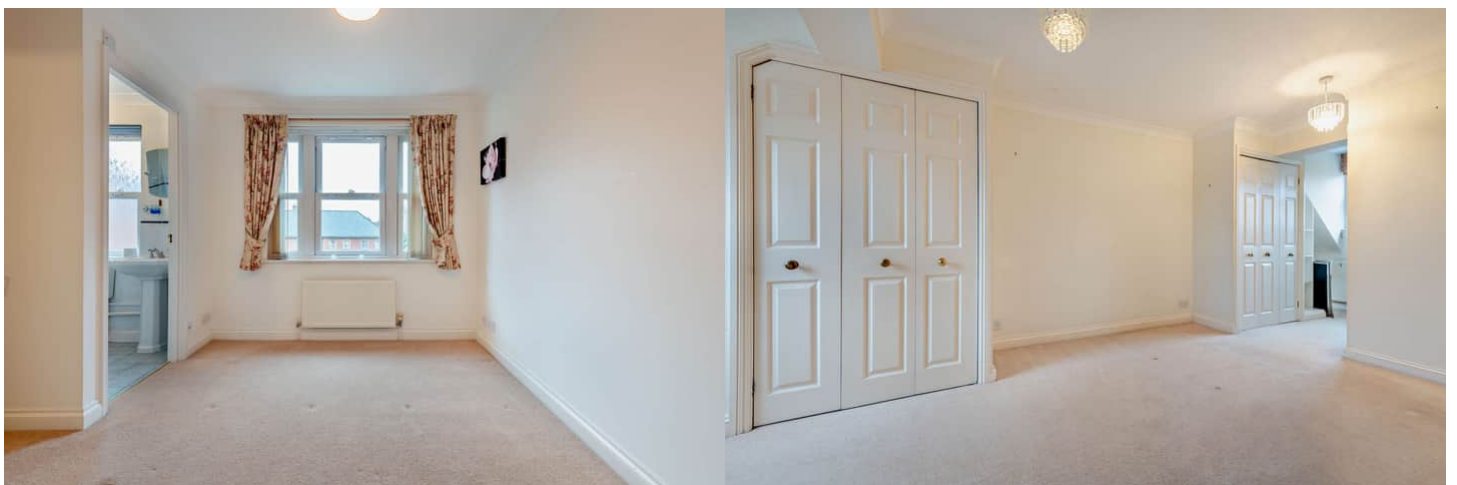
The property benefits from double glazing, gas central heating throughout and has off street parking available via an allocated parking space. The council tax band is E.

This is a leasehold property with 999 years from 2001 on the lease; the ground rent and the service charges are £1,200 per annum.

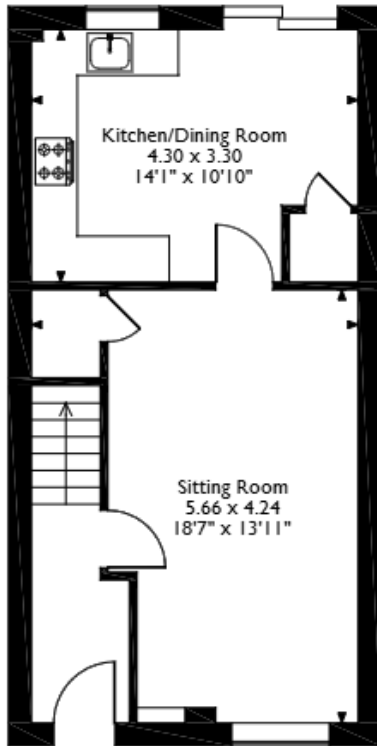
The interior of this beautifully presented property comprises a spacious living room and the fitted kitchen with dining area on the ground floor. The first floor consists of two bedrooms, including the master bedroom with ensuite bathroom and the family bathroom. The second floor hosts bedroom three with an ensuite bathroom. The exterior boasts a private rear yard.

Located in the heart of Salisbury, the property is close to a range of amenities, including shops, supermarkets, restaurants and pubs. Excellent transport connections can be found from the A36 and many local bus routes.

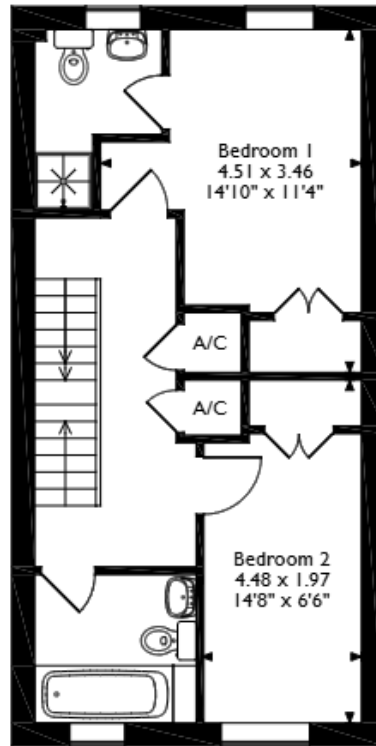
This exciting opportunity should not be missed! All enquiries can be made through Bettermove on 0330 004 0050.



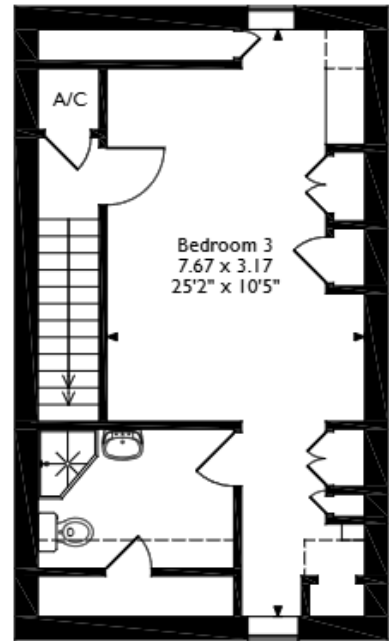
10 Magdalene Court, Gigant Street, Salisbury
Approximate Gross Internal Area
106 Sq M/1141 Sq Ft



Ground Floor



First Floor



Second Floor

Please note that the location of doors, windows and other items are approximate and this floorplan is to be used for illustrative purposes only. Unauthorized reproduction is prohibited.



20-22 Bridge End, Leeds, LS1 4DJ
t: 0330 004 0050 e: hello@bettermove.co.uk
www.bettermove.co.uk