



**Town Foot Farm  
Shilbottle  
Northumberland  
NE66 2DQ**

**Offers in Excess of £495,000**

**bettermove**

# Town Foot Farm

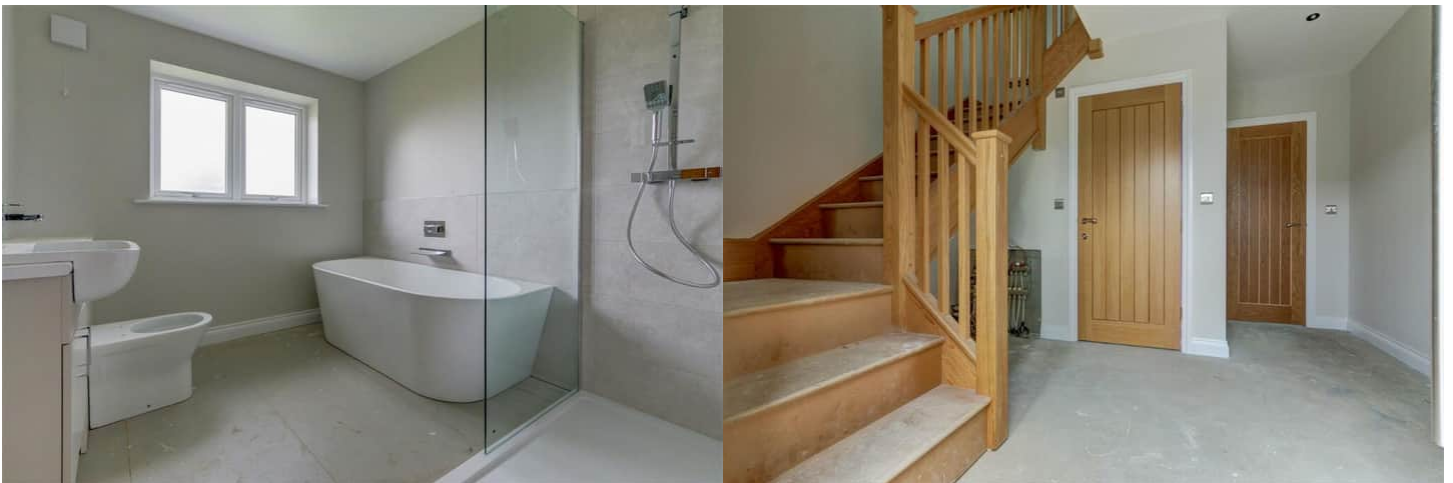
Bettermove are proud to present this luxury new build 4 bedroom Detached Family Home situated within the recently developed Town Foot Rise, available with no forward chain.

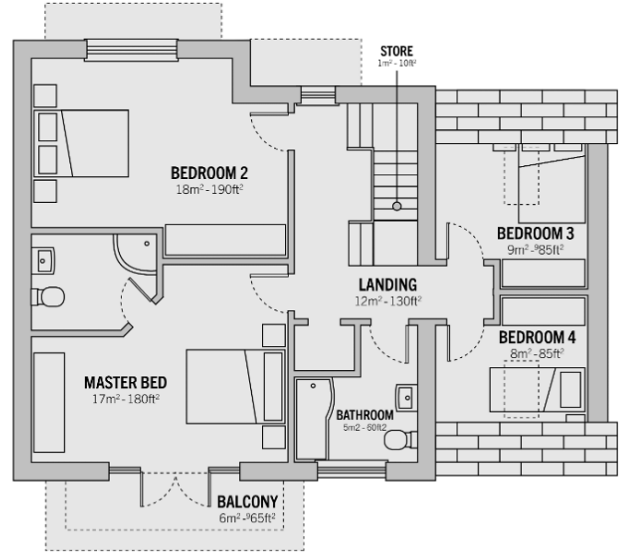
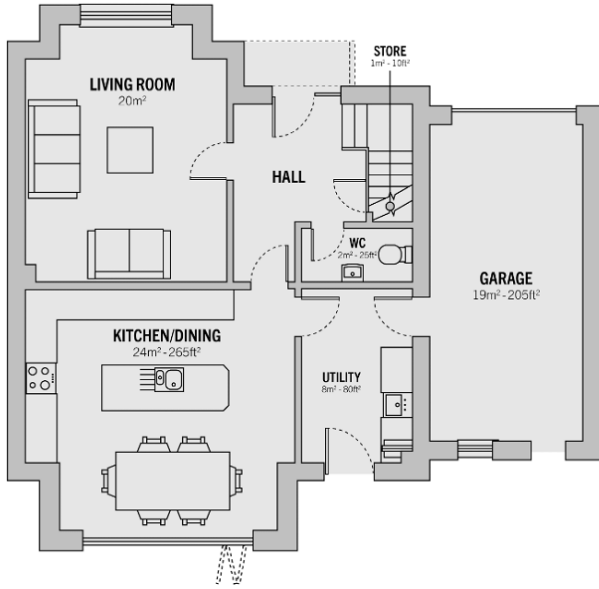
The property benefits from double glazing, air source heat pump, ground floor underfloor heating and has off street parking available via the driveway and the garage. The council tax band is F.

The interior of this beautifully presented property comprises a spacious living room, the open plan fitted kitchen with dining area, utility room with access to the garage and a convenient WC on the ground floor. The first floor consists of four bedrooms, including the master bedroom with an ensuite bathroom and the family bathroom. The exterior boasts a private rear garden, perfect for enjoying the summer months.

Located in the popular town of Shilbottle, the property is close to a range of amenities, including shops, supermarkets, restaurants and pubs. Excellent transport connections can be found from the A1 and many local bus routes.

This exciting opportunity should not be missed! All enquiries can be made through Bettermove on 0330 004 0050.









20-22 Bridge End, Leeds, LS1 4DJ  
t: 0330 004 0050 e: hello@bettermove.co.uk  
[www.bettermove.co.uk](http://www.bettermove.co.uk)