



**Meathop
Grange-Over-Sands
Cumbria
LA11 6RE**

Offers In Excess Of £395,000

bettermove

Grange-Over-Sands

Bettermove are proud to present this 5 bedroom barn conversion terraced house in Meathop, in the sought after area of Grange-Over-Sands.

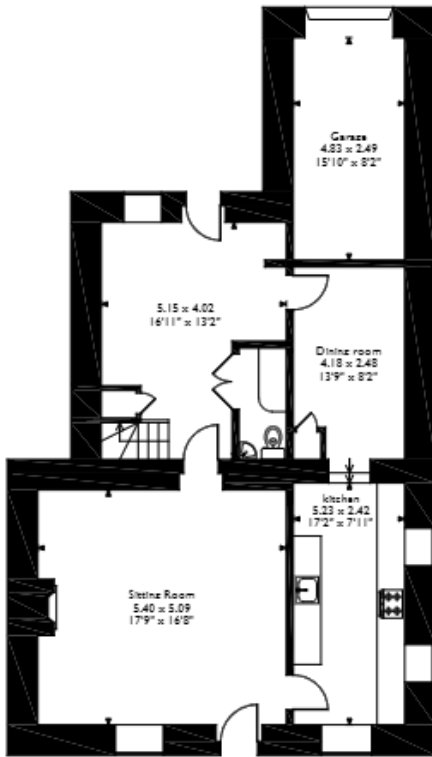
The property benefits from double glazing, gas central heating throughout and parking available via garage and off road. The council tax band is F.

The interior of this beautifully presented property comprises a spacious living room, lounge room, dining room and fitted kitchen on the ground floor. The first floor consists of 3 bedrooms including the master bedroom and the family bathroom. The second floor consists of 2 bedrooms. The exterior boasts a private rear garden, perfect for enjoying the summer months.

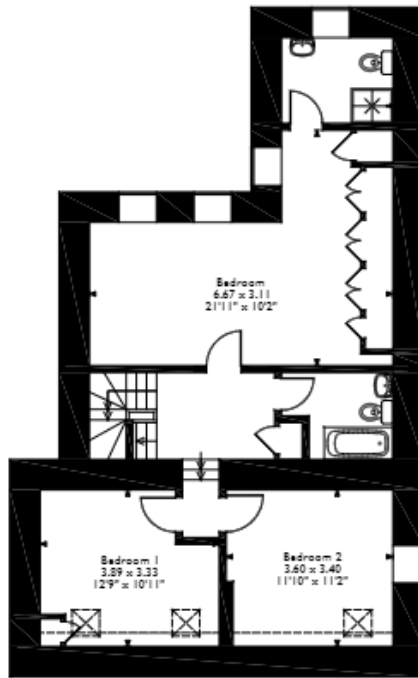
Located in the popular village of Meathop, the property is close to a range of amenities, including shops, supermarkets, restaurants and pubs. Excellent transport connections can be found from M6, local bus routes and Arnside Rail Station.



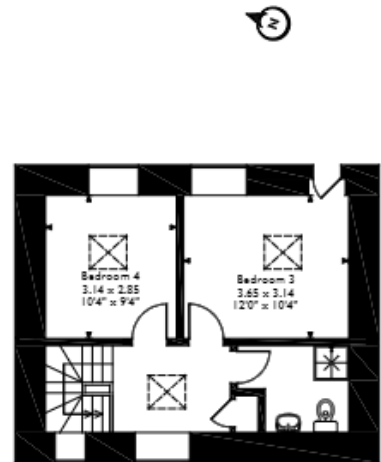
Meathop Court, Meathop, Grange-Over-Sands
 Approximate Gross Internal Area
 Main House = 183 Sq M/1970 Sq Ft
 Garage = 12 Sq M/129 Sq Ft
 Total = 195 Sq M/2099 Sq Ft



Ground Floor



First Floor



Second Floor

Please note that the location of doors, windows and other items are approximate and this floorplan is to be used for illustrative purposes only. Unauthorized reproduction is prohibited.

Energy Efficiency Rating		
	Current	Potential
<i>Very energy efficient - lower running costs</i>		
(92+) A		
(81-91) B		
(69-80) C		70
(55-68) D		
(39-54) E	44	
(21-38) F		
(1-20) G		
<i>Not energy efficient - higher running costs</i>		
England, Scotland & Wales	EU Directive 2002/91/EC	



20-22 Bridge End, Leeds, LS1 4DJ
t: 0330 004 0050 e: hello@bettermove.co.uk
www.bettermove.co.uk