



Burgundy Drive
Tottington
Bury
Lancashire
BL8 3NN

Offers In Excess Of £560,000

bettermove 

Burgundy Drive

Bury

Bettermove are proud to present this 5 bedroom detached house in Tottington.

The property benefits from double glazing, gas central heating throughout and has off street parking available.

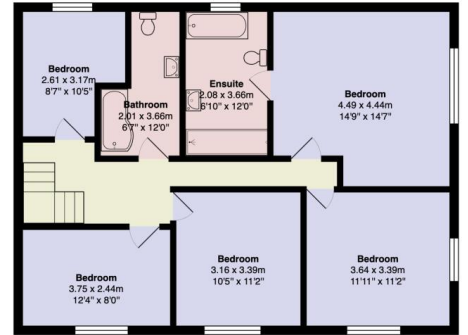
The council tax band is F.

The interior of this beautifully presented property comprises a spacious living room, dining room, gym, study, conservatory, utility room and fitted kitchen on the ground floor. The first floor consists of 5 bedrooms, en-suite and the family bathroom. The exterior boasts a private rear garden, perfect for enjoying the summer months.

Located in the popular town of Tottington, the property is close to a range of amenities, including shops, supermarkets, restaurants and pubs. Excellent transport connections can be found from the M66, A58 and many local bus routes.

This exciting opportunity should not be missed! All enquiries can be made through Bettermove on 0330 004 0050.





Total Area: 250.9 m² ... 2700 ft²
 All measurements are approximate and for display purposes only

Energy Efficiency Rating		
	Current	Potential
Very energy efficient - lower running costs		
(92+) A		
(81-91) B		
(69-80) C	72	80
(55-68) D		
(39-54) E		
(21-38) F		
(1-20) G		
Not energy efficient - higher running costs		
England, Scotland & Wales	EU Directive 2002/91/EC	



20-22 Bridge End, Leeds, LS1 4DJ
t: 0330 004 0050 e: hello@bettermove.co.uk
www.bettermove.co.uk