



**Anchorage Hill
Richmond
North Yorkshire
DL10 7AT**

Offers in Excess of £168,000

bettermove

Anchorage Hill

Richmond

A charming GRADE II Listed Cottage in Richmond, available CHAIN FREE for IMMEDIATE possession. Call for details!

Bettermove are proud to present this Grade II Listed 3 bedroom Cottage in Richmond available with no forward chain.

The property benefits from single glazing, gas central heating and has off street parking available for two cars. The council tax band is D.

The property is currently tenanted and will be sold vacant on possession - rental yields can be obtained through Bettermove.

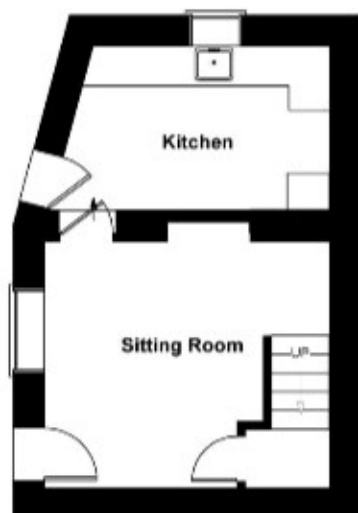
The interior of this property has original character features throughout and briefly comprises of the living room with a log burner and the fitted kitchen on the ground floor. The first floor consists of two bedrooms and the family bathroom. The second floor hosts the third bedroom.

Located in the popular residential area of Richmond, the property is close to a range of amenities, including shops, supermarkets, restaurants and pubs. Excellent transport connections can be found from the A1(M) and many local bus routes.

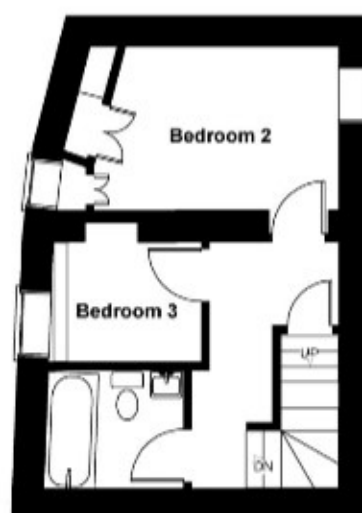
This exciting opportunity should not be missed! All enquiries can be made through Bettermove on 0330 004 0050.



Rookery Neuk



GROUND FLOOR



FIRST FLOOR



SECOND FLOOR

SKETCH PLAN NOT TO SCALE FOR IDENTIFICATION ONLY
The placement and size of all walls, doors, windows, staircases and fixtures are only approximate and cannot be relied upon as anything other than an illustration for guidance purposes only. No representation has been made by the seller, the agent or PotterPlans
www.potterplans.co.uk

20-22 Bridge End, Leeds, LS1 4DJ
t: 0330 004 0050 e: hello@bettermove.co.uk
www.bettermove.co.uk