



**Woodside Road  
Ketley  
Telford  
Shropshire  
TF1 5WT**

**Offers in Excess of £238,000**

**bettermove**

# Woodside Road Telford

Bettermove are proud to present this 3 bedroom Detached House in Keltley, available with no forward chain.

The property benefits from double glazing, gas central heating throughout and has off street parking available via the driveway and the garage. The council tax band is C.

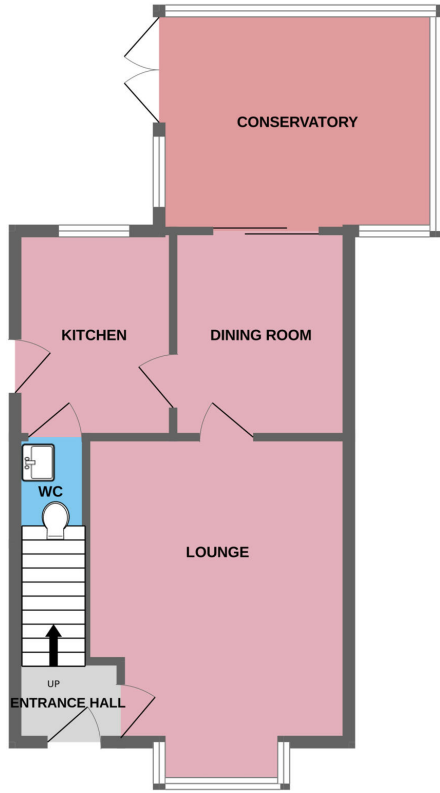
The interior of this property comprises a spacious living room, dining room, conservatory, the fitted kitchen and a convenient WC on the ground floor. The first floor consists of three bedrooms and the family bathroom. The exterior boasts a private rear garden, perfect for enjoying the summer months.

Located in the popular residential area of Keltley, the property is close to a range of amenities, including shops, supermarkets, restaurants and pubs. Excellent transport connections can be found from the M54, Oakengates Train Station and many local bus routes.

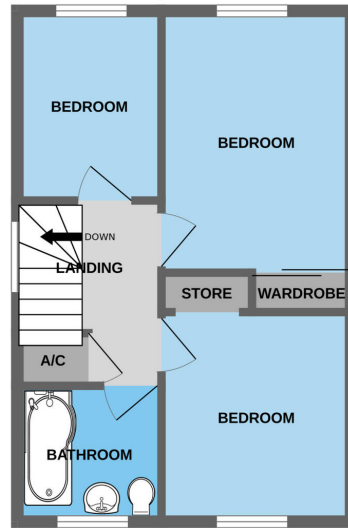
This exciting opportunity should not be missed! All enquiries can be made through Bettermove on 0330 004 0050.



GROUND FLOOR



1ST FLOOR



Made with Metropix ©2024

Energy Efficiency Rating		Current	Potential
<i>Very energy efficient - lower running costs</i>			
(92+)	<b>A</b>		
(81-91)	<b>B</b>		
(69-80)	<b>C</b>		<b>80</b>
(55-68)	<b>D</b>	<b>59</b>	
(39-54)	<b>E</b>		
(21-38)	<b>F</b>		
(1-20)	<b>G</b>		
<i>Not energy efficient - higher running costs</i>			
<b>England, Scotland &amp; Wales</b>		EU Directive 2002/91/EC	



20-22 Bridge End, Leeds, LS1 4DJ  
t: 0330 004 0050 e: hello@bettermove.co.uk  
[www.bettermove.co.uk](http://www.bettermove.co.uk)