



**Sidney Road  
Rochester  
Kent  
ME1 3HF**

**Offers In Excess Of £285,000**

**bettermove**

# Sidney Road Rochester

Bettermove are proud to present this 3 bedroom terraced house in Rochester available with no forward chain.

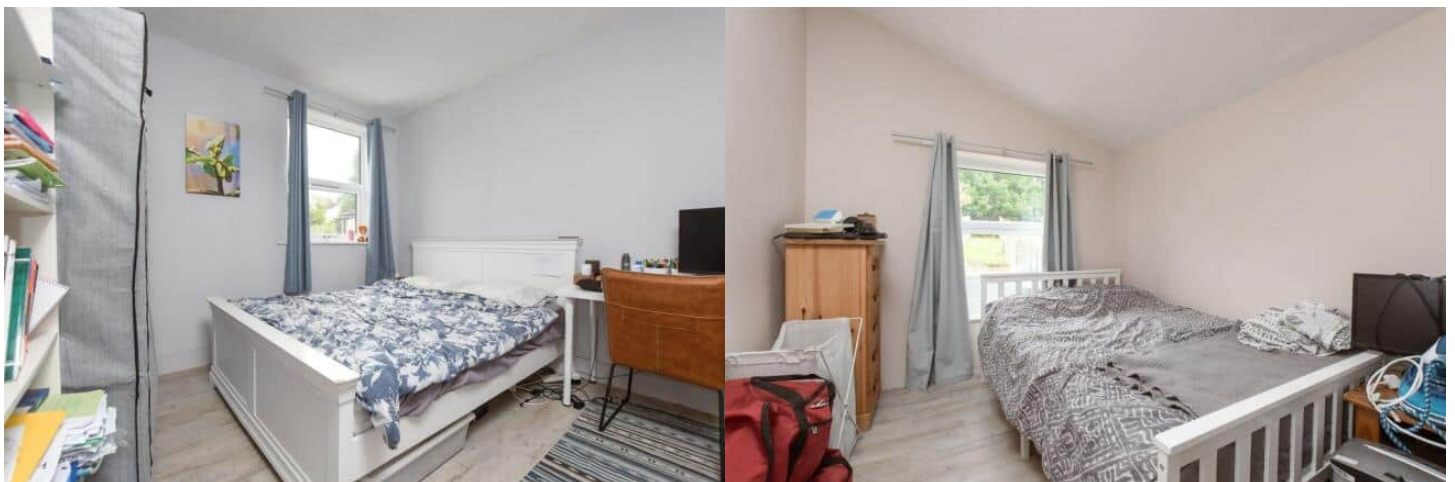
The property benefits from double glazing, gas central heating throughout.

The council tax band is B.

The interior of this beautifully presented property comprises a spacious living room, dining room, WC and fitted kitchen on the ground floor. The first floor consists of 3 bedrooms. The exterior boasts a private rear garden, perfect for enjoying the summer months.

Located in the popular town of Rochester, the property is close to a range of amenities, including shops, supermarkets, restaurants and pubs. Excellent transport connections can be found from Rochester Train Station and local bus routes.

This exciting opportunity should not be missed! All enquiries can be made through Bettermove on 0330 004 0050.



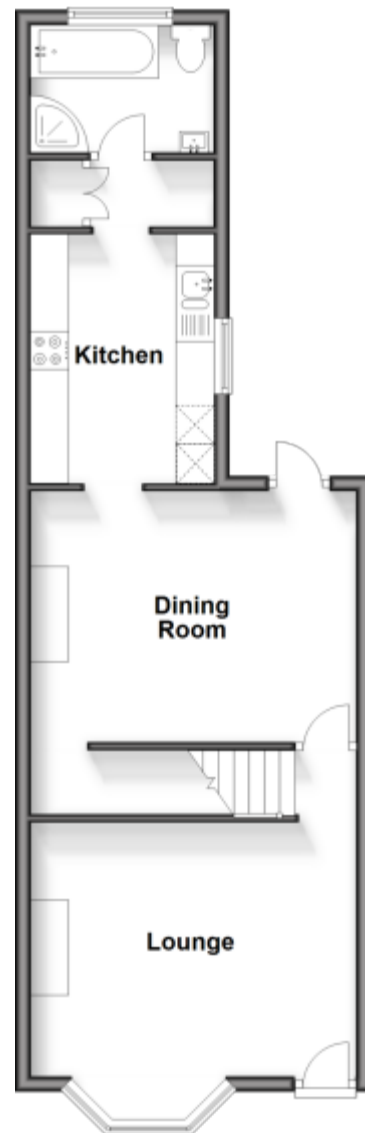
### First Floor

Approx. 41.1 sq. metres (442.1 sq. feet)



### Ground Floor

Approx. 48.0 sq. metres (516.2 sq. feet)



Energy Efficiency Rating		
	Current	Potential
<i>Very energy efficient - lower running costs</i>		
(92+) <b>A</b>		
(81-91) <b>B</b>		
(69-80) <b>C</b>		<b>80</b>
(55-68) <b>D</b>	<b>57</b>	
(39-54) <b>E</b>		
(21-38) <b>F</b>		
(1-20) <b>G</b>		
<i>Not energy efficient - higher running costs</i>		
<b>England, Scotland &amp; Wales</b>	EU Directive 2002/91/EC	





20-22 Bridge End, Leeds, LS1 4DJ  
t: 0330 004 0050 e: hello@bettermove.co.uk  
[www.bettermove.co.uk](http://www.bettermove.co.uk)