



**Pilling Crescent
Blackpool
Lancashire
FY3 7TT**

Offers in Excess of £132,000

bettermove

Pilling Crescent Blackpool

Bettermove are proud to present this 4 bedroom Terraced House in the sought after area of Blackpool.

The property benefits from double glazing, gas central heating throughout and has off street parking available via the driveway. The council tax band is A.

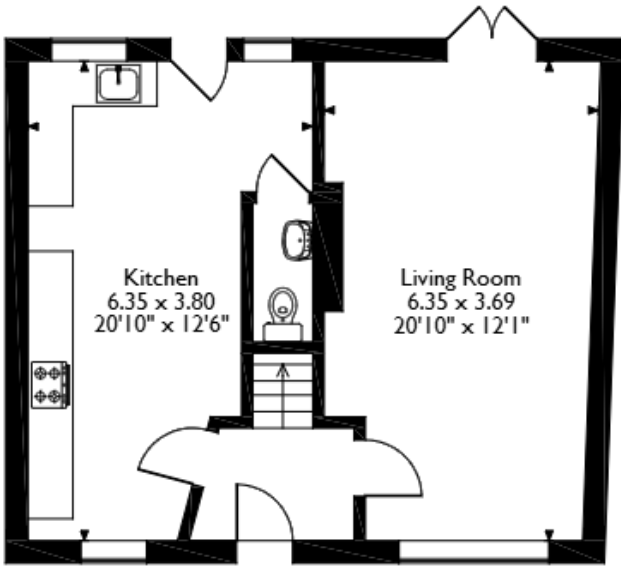
The interior of this well presented property comprises a spacious living room, the fitted kitchen and a convenient WC on the ground floor. The first floor consists of 4 bedrooms and the family bathroom. The exterior boasts a private rear garden, perfect for enjoying the summer months.

Located in the popular residential area of Blackpool, the property is close to a range of amenities, including shops, supermarkets, restaurants and pubs. Excellent transport connections can be found from Layton & Blackpool Train Station, the M55 and many local bus routes.

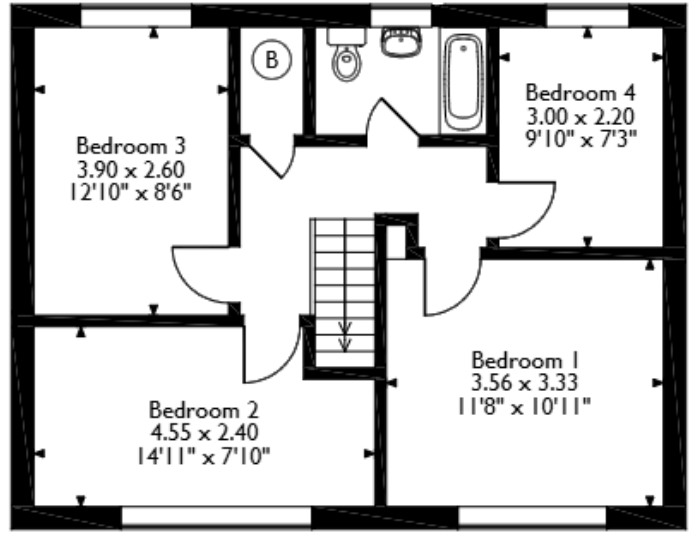
This exciting opportunity should not be missed! All enquiries can be made through Bettermove on 0330 004 0050.



62, Pilling Crescent, Blackpool
 Approximate Gross Internal Area
 102 Sq M/1098 Sq Ft




Ground Floor



First Floor

Please note that the location of doors, windows and other items are approximate and this floorplan is to be used for illustrative purposes only. Unauthorized reproduction is prohibited.

Energy Efficiency Rating		Current	Potential
<i>Very energy efficient - lower running costs</i>			
(92+)	A		
(81-91)	B		83
(69-80)	C	70	
(55-68)	D		
(39-54)	E		
(21-38)	F		
(1-20)	G		
<i>Not energy efficient - higher running costs</i>			
England, Scotland & Wales		EU Directive 2002/91/EC 	



20-22 Bridge End, Leeds, LS1 4DJ
t: 0330 004 0050 e: hello@bettermove.co.uk
www.bettermove.co.uk