



239 St Johns Way
Thetford
Norfolk
IP24 3NX

Offers in Excess of £126,000

bettermove

St Johns Way Thetford

Bettermove are proud to present this 3 bedroom End of Terrace House in available with no forward chain. The property requires some cosmetic improvements to bring it up to its full potential.

The property benefits from double glazing, gas central heating throughout and has residents parking available. The council tax band is A.

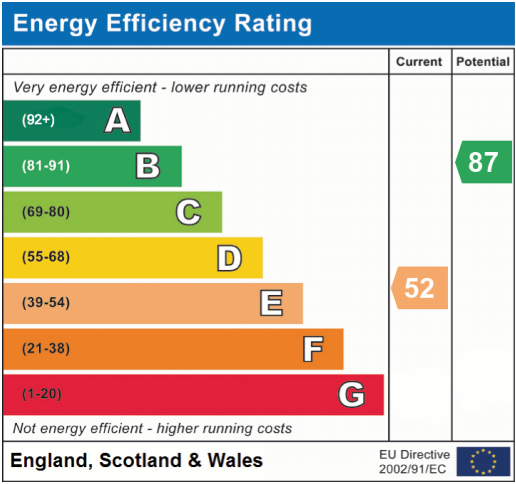
The property is currently tenanted and can be sold vacant on possession - rental yields can be obtained through Bettermove.

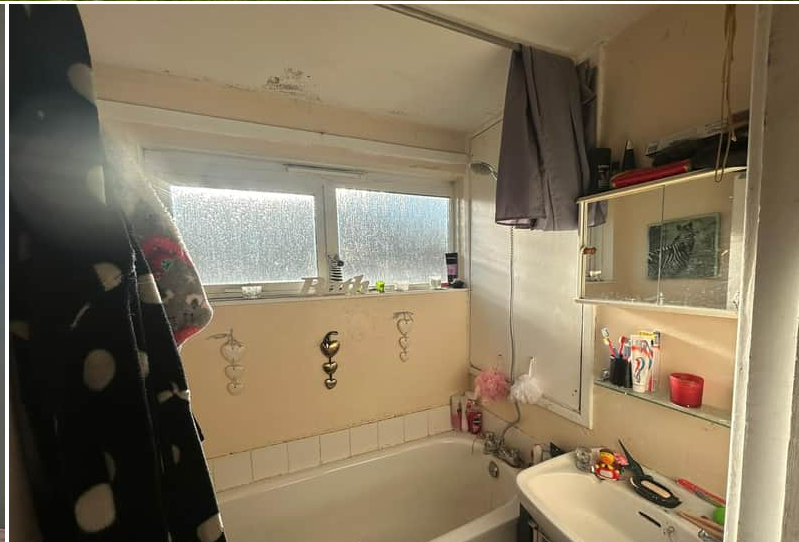
The interior of this property comprises a spacious living room, the fitted kitchen and utility room on the ground floor. The first floor consists of three bedrooms and the family bathroom. The exterior boasts a private side garden, perfect for enjoying the summer months.

Located in the popular town of Thetford, the property is close to a range of amenities, including shops, supermarkets, restaurants and pubs. Excellent transport connections can be found from Thetford Train Station, the A11 and many local bus routes.

This exciting opportunity should not be missed! All enquiries can be made through Bettermove on 0330 004 0050.







20-22 Bridge End, Leeds, LS1 4DJ
t: 0330 004 0050 e: hello@bettermove.co.uk
www.bettermove.co.uk