



**Wheatfield Road
Luton
Bedfordshire
LU4 0TR**

Offers In Excess Of £480,000

bettermove

Wheatfield Road

Luton

Bettermove are proud to present this 4 bedroom detached house in Luton.

The property benefits from double glazing, gas central heating throughout and has off street parking available.

The council tax band is D.

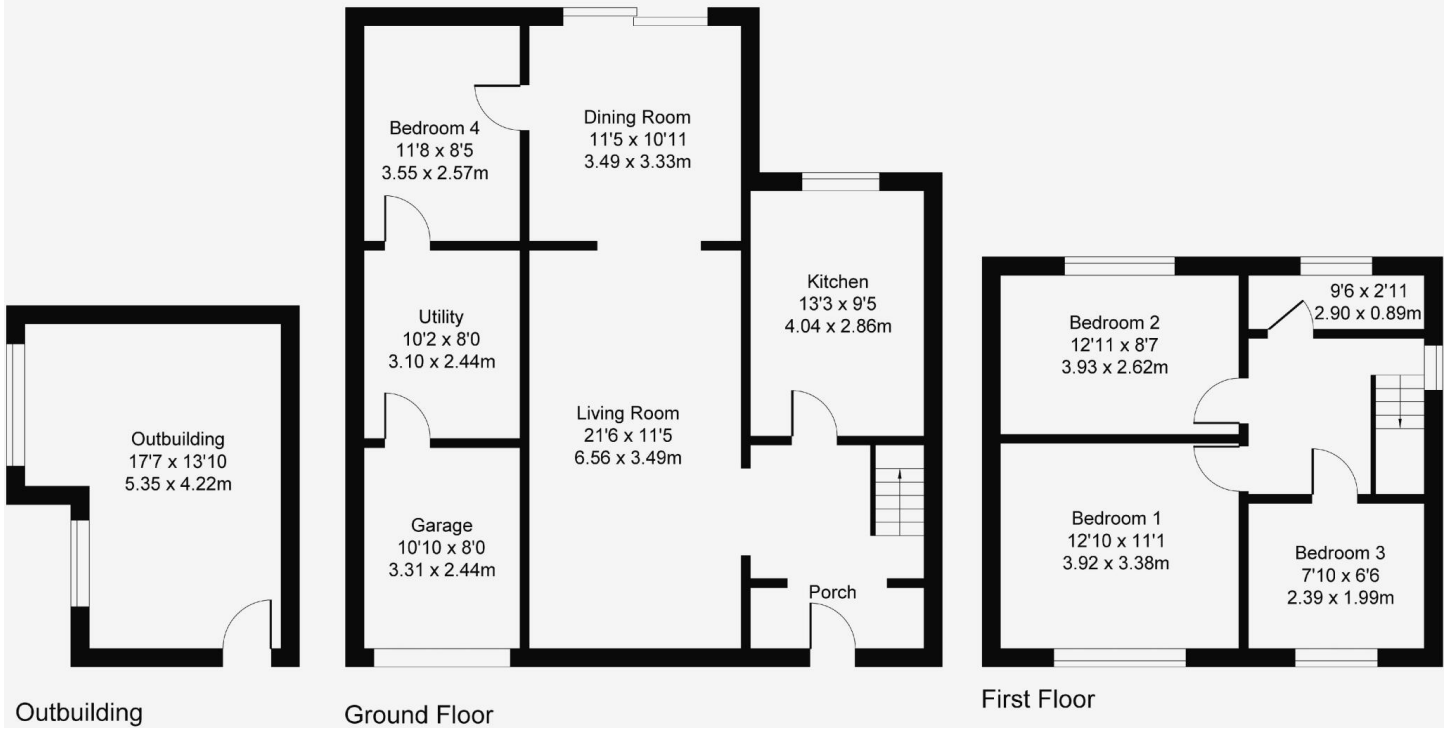
The interior of this beautifully presented property comprises a spacious living room, dining room, utility, bedroom and fitted kitchen on the ground floor. The first floor consists of 3 bedrooms and the family bathroom. The exterior boasts a private rear garden with swimming pool, perfect for enjoying the summer months.

Located on the boarder of Luton & Dunstable, the property is close to a range of amenities, including shops, supermarkets, restaurants and pubs. Excellent transport connections can be found from the M1, A5505 and many local bus routes.

This exciting opportunity should not be missed! All enquiries can be made through Bettermove on 0330 004 0050.



**Approximate Gross Internal Area
1604 sq ft - 149.0 sq m**



Energy Efficiency Rating		
	Current	Potential
<i>Very energy efficient - lower running costs</i>		
(92+) A		
(81-91) B		
(69-80) C		80
(55-68) D	69	
(39-54) E		
(21-38) F		
(1-20) G		
<i>Not energy efficient - higher running costs</i>		
England, Scotland & Wales	EU Directive 2002/91/EC	



20-22 Bridge End, Leeds, LS1 4DJ
t: 0330 004 0050 e: hello@bettermove.co.uk
www.bettermove.co.uk