



**Child Street
Brotton
Saltburn-by-the-Sea
North Yorkshire
TS12 2SU**

Offers In Excess Of £72,000

bettermove

Child Street Saltburn-by-the-Sea

Bettermove are proud to present this 2 bedroom terraced house in Saltburn-by-the-Sea available with no forward chain.

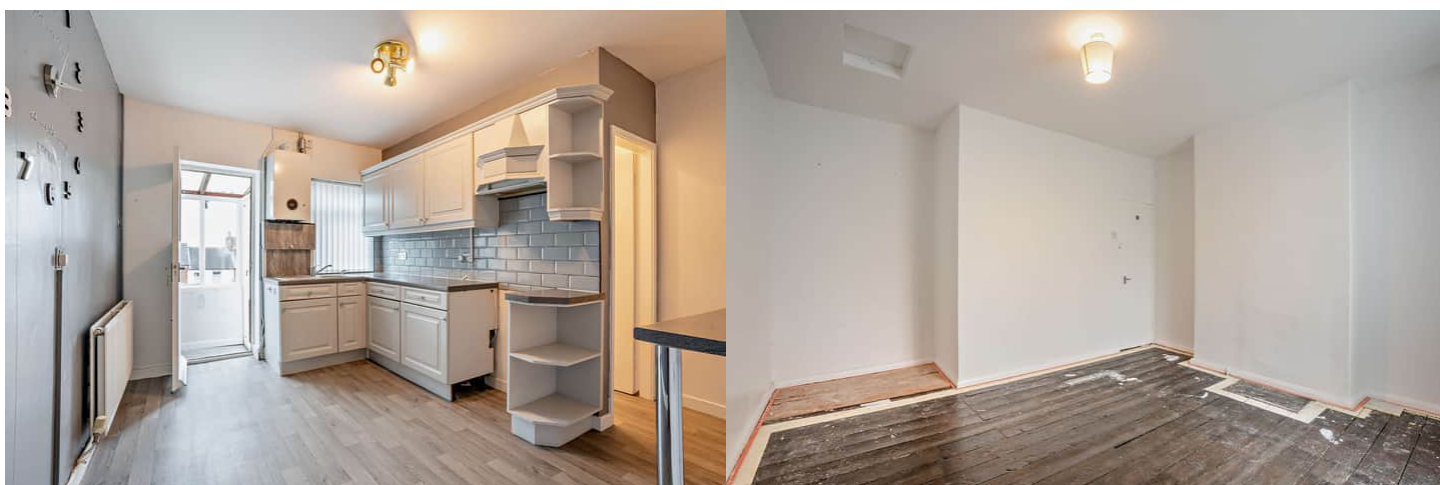
The property benefits from double glazing, gas central heating throughout.

The council tax band is A.

The interior of this beautifully presented property comprises a spacious living room and fitted kitchen on the ground floor. The first floor consists of 2 bedrooms and the family bathroom. The exterior boasts a private rear garden, perfect for enjoying the summer months.

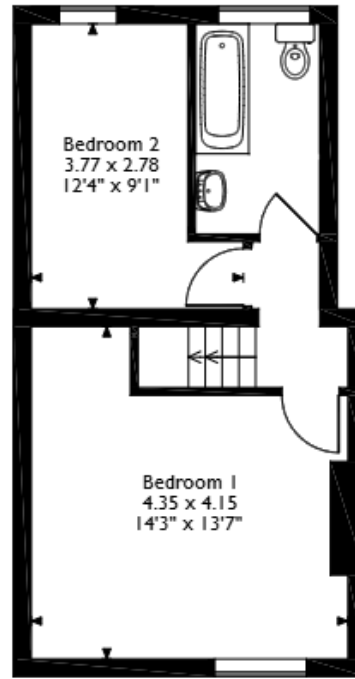
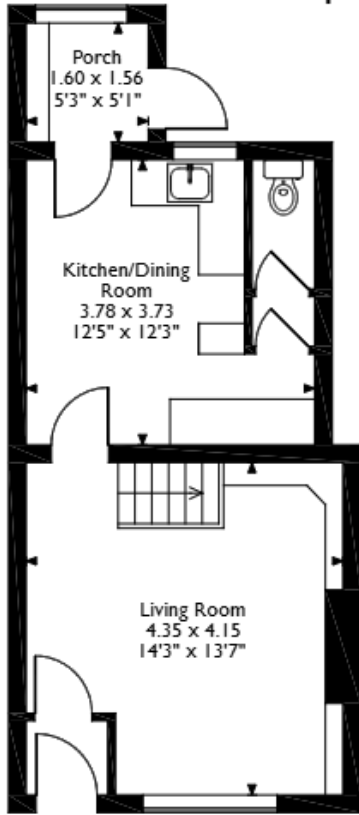
Located in the popular coastal village of Brotton, the property is close to a range of amenities, including shops, supermarkets, restaurants and pubs. Excellent transport connections can be found from the A174, A173 and many local bus routes.

This exciting opportunity should not be missed! All enquiries can be made through Bettermove on 0330 004 0050.



Child Street, Brotton, Saltburn-by-the-Sea

Approximate Gross Internal Area 69 Sq M/743 Sq Ft



Please note that the location of doors, windows and other items are approximate and this floorplan is to be used for illustrative purposes only. Unauthorized reproduction is prohibited.

Energy Efficiency Rating		Current	Potential
<i>Very energy efficient - lower running costs</i>			
(92+)	A		90
(81-91)	B		
(69-80)	C	72	
(55-68)	D		
(39-54)	E		
(21-38)	F		
(1-20)	G		
<i>Not energy efficient - higher running costs</i>			
England, Scotland & Wales		EU Directive 2002/91/EC	



20-22 Bridge End, Leeds, LS1 4DJ
t: 0330 004 0050 e: hello@bettermove.co.uk
www.bettermove.co.uk