



**Routh Court
Feltham
Greater London
TW14 8SJ**

Offers In Excess Of £160,000

bettermove

Routh Court Feltham

Bettermove are proud to present this 1 bedroom flat in Feltham available with no forward chain/welcoming cash buyers only.

The property benefits from double glazing, gas central heating throughout and has off street parking available.

The council tax band is D.

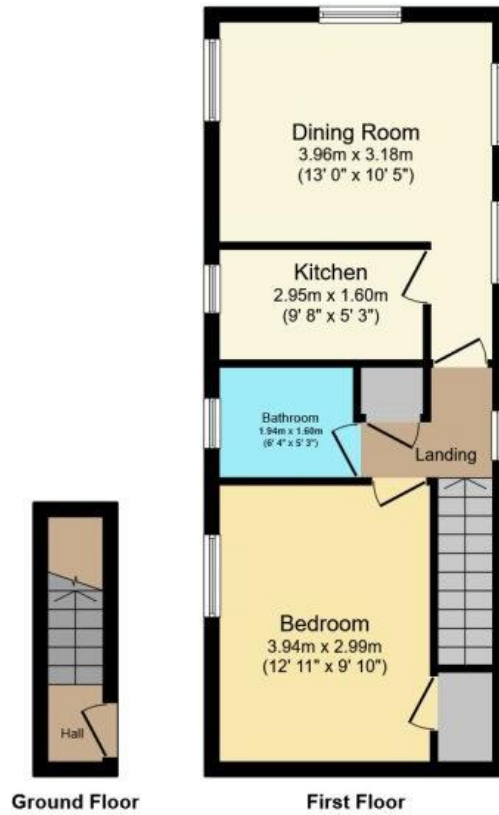
This is a leasehold property with 99 years on the lease from 1989; the service charge is £130pcm.

The interior of this property comprises a spacious living room, fitted kitchen, 1 bedroom and the bathroom.

Located in the popular town of Feltham, the property is close to a range of amenities, including shops, supermarkets, restaurants and pubs. Excellent transport connections can be found from the A30, Heathrow Airport and many local bus routes.

This exciting opportunity should not be missed! All enquiries can be made through Bettermove on 0330 004 0050.





This floor plan is for illustrative purposes only. It is not drawn to scale. Any measurements, floor areas (including any total floor area), openings and orientation are approximate. No details are guaranteed, they cannot be relied upon for any purpose and they do not form part of any agreement. No liability is taken for any error, omission or misstatement. A party must rely upon its own inspection(s).
 Powered by www.focalagent.com

Energy Efficiency Rating		
	Current	Potential
<i>Very energy efficient - lower running costs</i>		
(92+) A		
(81-91) B		
(69-80) C	75	75
(55-68) D		
(39-54) E		
(21-38) F		
(1-20) G		
<i>Not energy efficient - higher running costs</i>		
England, Scotland & Wales	EU Directive 2002/91/EC	



20-22 Bridge End, Leeds, LS1 4DJ
t: 0330 004 0050 e: hello@bettermove.co.uk
www.bettermove.co.uk