



**Hill Rise  
Chippenham  
Wiltshire  
SN15 1AY**

**Offers In Excess Of £310,000**

**bettermove**

## Hill Rise Chippenham

Bettermove are proud to present this 5 bedroom semi-detached house in Chippenham.

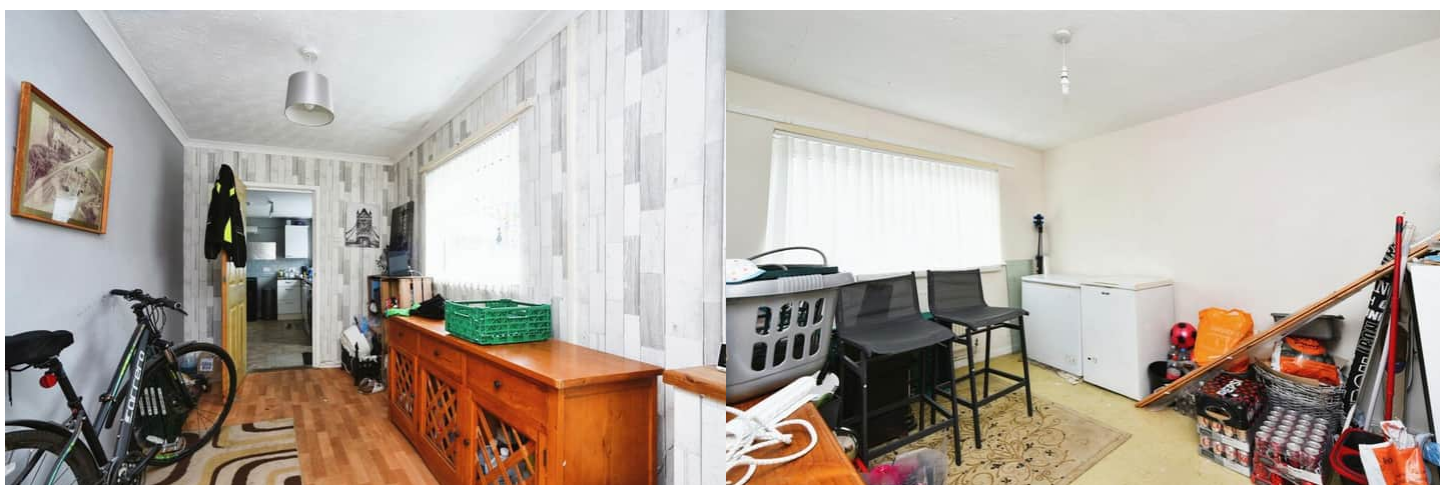
The property benefits from double glazing, gas central heating throughout.

The council tax band is A.

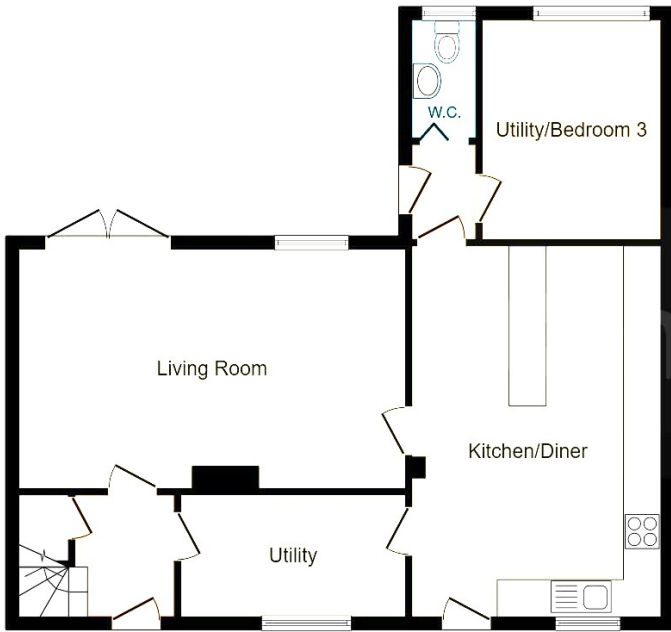
The interior of this property comprises a spacious living room, utility room, bedroom/utility, w/c and fitted kitchen on the ground floor. The first floor consists of 5 bedrooms, en-suite and the family shower room. The exterior boasts a private rear garden, perfect for enjoying the summer months.

Located in the popular town of Chippenham, the property is close to a range of amenities, including shops, supermarkets, restaurants and pubs. Excellent transport connections can be found from the A350, A420 and Chippenham train station.

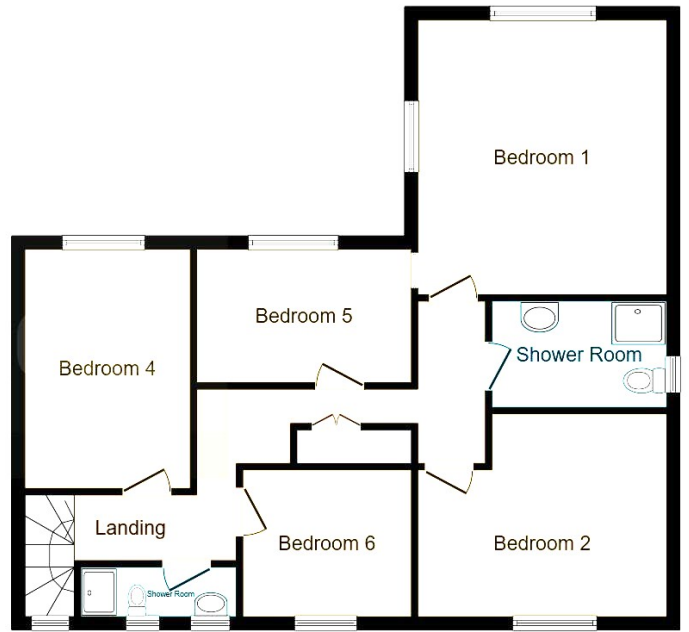
This exciting opportunity should not be missed! All enquiries can be made through Bettermove on 0330 004 0050.







**Ground Floor**



**First Floor**

This floor plan is for illustrative purposes only. It is not drawn to scale. Any measurements, floor areas (including any total floor area), openings and orientation are approximate. No details are guaranteed, they cannot be relied upon for any purpose and they do not form part of any agreement. No liability is taken for any error, omission or misstatement. A party must rely upon its own inspection(s). Powered by [www.focalagent.com](http://www.focalagent.com)

Energy Efficiency Rating		
	Current	Potential
<i>Very energy efficient - lower running costs</i>		
(92+) <b>A</b>		
(81-91) <b>B</b>		
(69-80) <b>C</b>		79
(55-68) <b>D</b>	65	
(39-54) <b>E</b>		
(21-38) <b>F</b>		
(1-20) <b>G</b>		
<i>Not energy efficient - higher running costs</i>		
<b>England, Scotland &amp; Wales</b>	EU Directive 2002/91/EC	



20-22 Bridge End, Leeds, LS1 4DJ  
t: 0330 004 0050 e: hello@bettermove.co.uk  
[www.bettermove.co.uk](http://www.bettermove.co.uk)