



**Albany Court
Pontefract
West Yorkshire
WF8 3QE**

Offers In Excess Of £260,000

bettermove

Albany Court

Pontefract

Bettermove are proud to present this 2 bedroom detached house in Pontefract available with no forward chain.

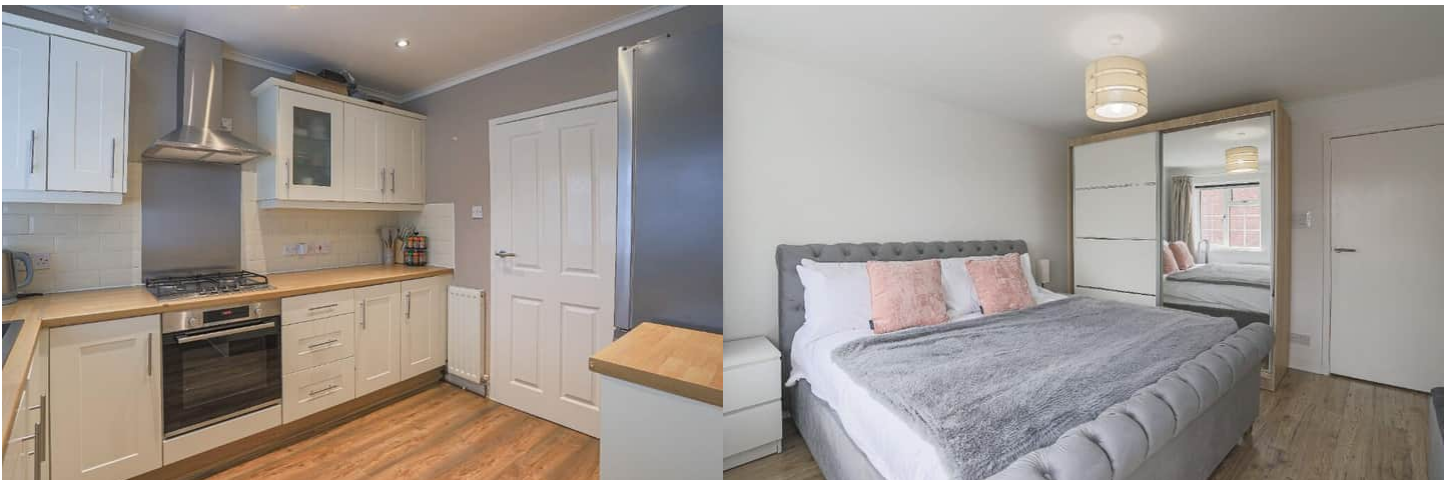
The property benefits from double glazing, gas central heating throughout and has off street parking available via the garage to the rear.

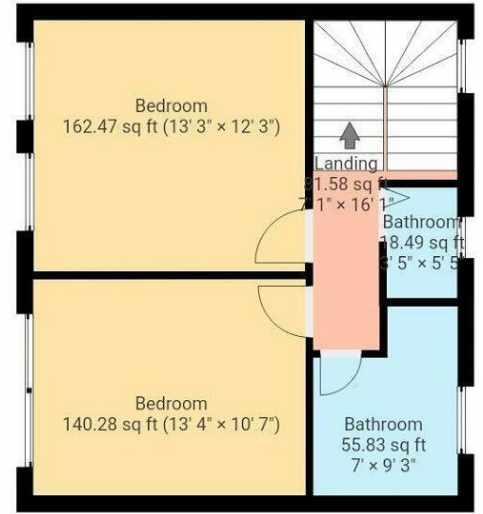
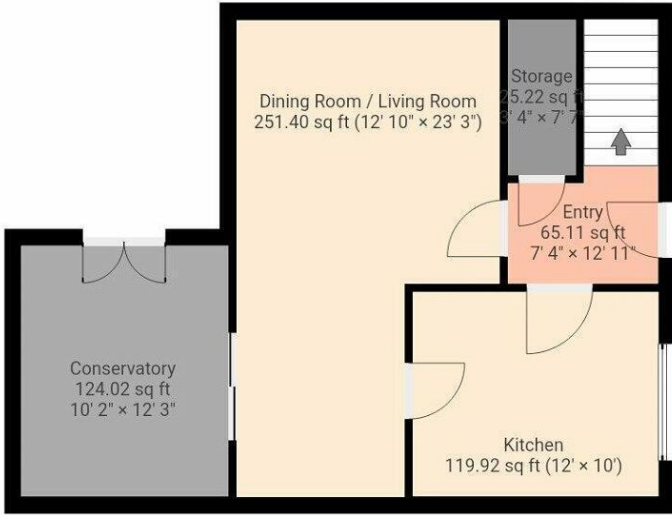
The council tax band is C.

The interior of this beautifully presented property comprises a spacious living room, dining room and fitted kitchen on the ground floor. The first floor consists of 2 bedrooms, w/c and the family bathroom. The exterior boasts a private landscaped rear garden, perfect for enjoying the summer months.

Located in the popular town of Pontefract, the property is close to a range of amenities, including shops, supermarkets, restaurants and pubs. Excellent transport connections can be found from the A639, Pontefract train station and local bus routes.

This exciting opportunity should not be missed! All enquiries can be made through Bettermove on 0330 004 0050.





THIS FLOORPLAN IS PROVIDED WITHOUT WARRANTY OF ANY KIND. SENSOPIA DISCLAIMS ANY WARRANTY INCLUDING, WITHOUT LIMITATION, SATISFACTORY QUALITY OR ACCURACY OF DIMENSIONS.



20-22 Bridge End, Leeds, LS1 4DJ
t: 0330 004 0050 e: hello@bettermove.co.uk
www.bettermove.co.uk